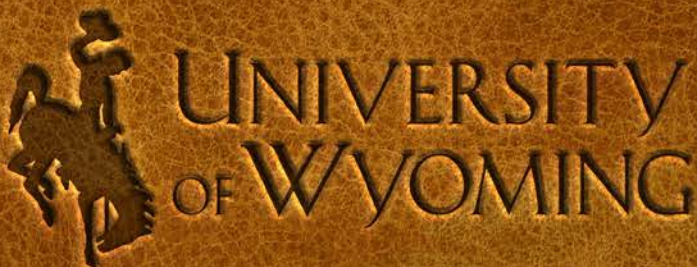


**ECONOMIC
CONTRIBUTIONS
FROM
AGRICULTURAL
PRODUCTION
IN
WYOMING
2021**



College of Agriculture, Life Sciences
and Natural Resources

Agricultural and
Applied Economics

Wyoming Agricultural
Experiment Station

Extension

University of Wyoming, Department of Agricultural and Applied Economics

Dr. Roger Coupal

Professor, Community Development Specialist

Ms. Amy Nagler

Research Scientist

Agriculture is integral to the Wyoming economy, supporting local communities and defining landscapes. This report provides a snapshot of how agricultural production contributed to Wyoming's economy in 2021. This report is the first of the following three publications from the University of Wyoming Department of Agricultural and Applied Economics:

Economic Contributions from Agricultural Production in Wyoming, 2021

Innovations and Entrepreneurial Enterprises in Wyoming's Agriculture Sector

The Cost of Community Services Associated with Agricultural and Residential Land Uses across Wyoming

B-1393 | December 2023

Edited by **Brooke Ortel**

UW Extension Communications & Technology

Layout by **Jeremy Cain**

UW Extension Communications & Technology

This research was supported in part by the intramural research program of the U.S. Department of Agriculture, National Institute of Food and Agriculture, Hatch-Multistate accession #1019991. The findings and conclusions in this preliminary publication have not been formally disseminated by the U.S. Department of Agriculture and should not be construed to represent any agency determination or policy.

Issued in furtherance of State Agricultural Experiment Station work of the 1887 Hatch Act, as amended through public law 107-293, November 13, 2002, in cooperation with the U.S. Department of Agriculture. Eric Webster, director, Wyoming Agricultural Experiment Station, University of Wyoming, College of Agriculture, Life Sciences and Natural Resources, Laramie, Wyoming 82071.

It is the policy of the University of Wyoming not to discriminate against any individual on the basis of race, sex, gender, color, religion, national origin, marital status, disability, age, veteran status, sexual orientation, genetic information, political belief, or other status protected by state and federal statutes or University Regulations in matters of employment, services or in the educational programs or activities it operates, in accordance with civil rights legislation and University commitment. To request accommodations, please contact the UW Extension Communications & Technology Office at (307) 766-5695 or uwe-ct@uwo.edu to discuss possible solution(s) to fit your specific needs.

Contents

Introduction	4
A brief overview of agricultural lands and production value in Wyoming.....	4
Wyoming’s agricultural land cover	4
The production value of Wyoming’s agricultural commodities	4
Economic contributions from agriculture: Breaking it down.....	5
Economic impact analysis methods.....	6
Wyoming’s agricultural industries	6
Total economic output in Wyoming related to agricultural production	6
Direct agricultural production output by industry	7
Indirect business-to-business output related to Wyoming agriculture	7
Induced household-to-business output related to Wyoming agriculture	8
Employment and labor income related to Wyoming agriculture.....	8
Tax impacts related to Wyoming agriculture	9
Further reading.....	10

Appendix: County tables

Overview of county-level economic contributions from agriculture	11
Albany County	12
Big Horn County	14
Campbell County.....	16
Carbon County	18
Converse County.....	20
Crook County	22
Fremont County.....	24
Goshen County	26
Hot Springs County	28
Johnson County	30
Laramie County.....	32
Lincoln County	34
Natrona County	36
Niobrara County	38
Park County	40
Platte County	42
Sheridan County.....	44
Sublette County.....	46
Sweetwater County	48
Teton County	50
Uinta County	52
Washakie County.....	54
Weston County.....	56

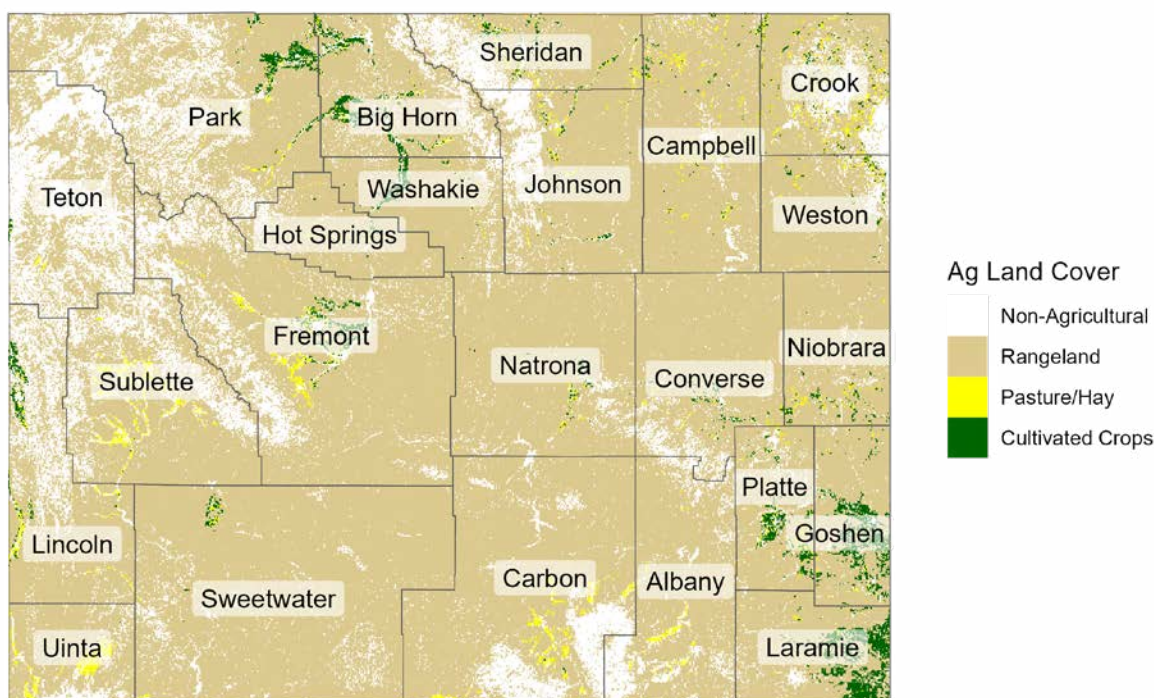


Figure 1. Wyoming agricultural land cover.

Introduction

Wyoming’s agricultural industries support communities through direct farm-gate sales. Benefits from these sales are multiplied as a portion of these dollars are spent (and re-spent) in local economies.

Agricultural businesses make supply-chain purchases for inputs such as farm machinery, farm and ranch supplies, and fuel. Agricultural industry and supply-chain labor income supports local businesses that provide housing, food service, healthcare, and other household spending. Wyoming agriculture also fosters community security through economic diversification and creates working landscapes valued for conservation and tourism.

This report estimates the economic contributions from agricultural production to Wyoming’s economy in 2021.¹ A brief description of Wyoming’s agricultural land-cover resources and production values provides background for an economic impact analysis. The impact analysis estimates the total contribution of agricultural industries to the Wyoming economy.

County-level output tables for all statewide measures (excluding tax impacts) are included for each of Wyoming’s 23 counties. County measures are estimated using separate agricultural industry contribution analysis for each county.

A brief overview of agricultural lands and production value in Wyoming

Wyoming’s agricultural land resources drive livestock and crop production across the state. The following sections provide a brief overview of state land resources and agricultural production.

Wyoming’s agricultural land cover

Wyoming’s agricultural lands are dominated by grassland and shrubland: 81% of the state’s land cover consists of these two categories, which are together considered agricultural rangelands. An additional 2% of the state’s land cover is used as cultivated cropland and another 1% as pasture and hay land (Figure 1).

Grazing on leased public rangelands is integral to Wyoming livestock production. Ranch homesteads are often located on private lands near water and hay meadows, and rely on seasonal grazing on adjacent leased public rangelands. Dryland and irrigated cultivated croplands are concentrated in southeastern Wyoming, the north-central Bighorn Basin, Wind River Valley, and Powder River Basin. Pasture and hay lands are more widespread, following irrigated bottomlands that flank Wyoming’s many mountain ranges. In basins and lowland eastern counties, pastures and hay lands are also mixed with cultivated croplands.

The production value of Wyoming’s agricultural commodities

Annual Wyoming Agricultural Statistics Bulletins ([NASS 2023a](#)), Census of Agriculture fact sheets ([NASS 2019](#)), and Wyoming State Agriculture Overviews ([NASS 2023b](#)), published by the USDA National Agricultural Statistics Service (NASS) Wyoming Field Office, provide comprehensive overviews of Wyoming’s agricultural production and production value. Table 1 summarizes highlights from the 2022 bulletin, with updates from NASS survey data. All data is from 2021.

1. *The Economic Importance of Wyoming Agricultural Production* (Taylor, Foulke, and Coupal 2017), which estimates the economic impact of Wyoming agriculture in 2014, provides historical perspective for this 2021 analysis. Visit <https://bit.ly/b-1314> to view the 2014 report.

Table 1. Wyoming agricultural production and value highlights, 2021

Number of farm and ranch operations	Average area operated (acres/operation)	Acres operated, state total
12,200	2,377	29,000,000

Wyoming livestock	Inventory (head)	Value of inventory ¹
Cattle and calves	1,250,000	\$1,650,000,000
Hogs and pigs	105,000	\$120,344,000
Sheep and lambs	340,000	lambs \$50,880,000 ² wool \$5,512,000
Milk cows on farms	8,500	milk production \$41,416,000
Honeybee colonies	38,000	\$4,562,000

Wyoming crop	Acres harvested	Value of production ³
Hay, including alfalfa	940,000	\$395,458,000
Wheat (winter)	95,000	\$20,368,000
Corn (grain)	79,000	\$62,568,000
Barley	72,000	\$36,757,000
Sugar beets	30,600	\$44,247,000 ⁴
Dry edible beans	15,700	\$14,364,000
Corn (silage)	12,000	[D]

Source:

USDA NASS Wyoming Agricultural Statistics 2022 (reporting 2021 values)

https://www.nass.usda.gov/Statistics_by_State/Wyoming/Publications/Annual_Statistical_Bulletin/

Notes:

¹ Inventory multiplied by value per head

² Lamb crop multiplied by value per head

³ Production multiplied by marketing year average price

⁴ Updated from NASS Quick Stats:

<https://quickstats.nass.usda.gov/results/B8E90D63-17B9-3041-8160-7C582601CF15>

Notes: “[D]” indicates data withheld by NASS to avoid disclosing data for individual operations

In 2021, 12,200 farms and ranches operated on 29 million acres of private lands in Wyoming. The state’s average operation size is 2,377 acres (not including leased grazing lands), the largest in the United States.

Cattle and hay production dominate Wyoming’s agricultural production values. In 2021, cattle and calves totaled 1.25 million head, with an inventory value of \$1.650 billion. Hay is by far the largest crop in Wyoming, with 940,000 acres harvested in 2021, followed by wheat (95,000 acres), corn harvested for grain (79,000

acres), and barley (72,000 acres). The production value of all types of grass and alfalfa hay in 2021 was \$395 million—more than twice the value of Wyoming wheat, corn, barley, and dry edible bean production combined.

Economic contributions from agriculture: Breaking it down

The value of agriculture to Wyoming’s economy is evaluated based on the following questions.

- How much value is added to the Wyoming economy from farm and ranch production?
- What are the related businesses that support Wyoming’s agricultural production industries?
- What businesses are supported by agricultural and supply-chain worker households?
- How many jobs are directly supported by agricultural industries?
- How many jobs are supported by ag supply-chain purchases and spending by agricultural industry and supply-chain worker households?

Farm-gate sales from agricultural production contribute directly to the state economy. In addition, a “ripple” of economic activity supports related businesses, both through the agricultural supply chain for inputs, and as income from households employed in agriculture and related businesses re-spent locally. Both this “indirect” business-to-business and “induced” household-to-business economic activity contributes to the total economic impact from agricultural production.

For every dollar generated by agricultural production in 2021, local supply-chain purchases supporting agricultural businesses generated an additional \$0.28 in Wyoming. Local spending by agricultural and supply-chain worker households generated an additional \$0.20. These supply-chain and household spending multipliers add to the economic contribution from agricultural industries.

Agricultural production supports jobs, both through direct employment in ag and through employment in industries that support agricultural supply chains and industries that support agricultural and ag supply-chain employee households. Taxes paid on this economic activity support local government; government transfers received by producers support farm and ranch operations.

Economic impact analysis methods

The contribution of agriculture to the state’s economy is estimated using an Industry Contribution Analysis modeled using IMPLAN software.

The IMPLAN model uses agricultural output data from the USDA’s Economic Research Service (ERS) and National Agricultural Statistics Service (NASS) ([IMPLAN 2023a](#)). Data used in modeling are public, current, and based on observations and surveys.

Understanding economic impact analysis:

Direct, indirect, and induced contributions

Direct Output

Direct economic output from agricultural industries is often referred to as “farm-gate sales.” On a typical Wyoming cow-calf operation, gross sales from calves, yearlings, culled animals, and excess hay would all be counted as direct economic outputs. This report considers the direct economic output from all agricultural industries in Wyoming.

+ Indirect Output

Indirect, or business-to-business output, values local supply-chain purchases for inputs related to agricultural production. For example, a cow-calf producer buys winter feed, fencing supplies, and fuel for trucks and tractors. A portion of these business purchases are made in Wyoming and support local economies. Industries that supply ag businesses in turn re-spend a portion of this money locally. This spending is counted as an indirect economic output and contributes to total impact.

+ Induced Output

Induced, or household-to-business output, is generated as household income from agricultural and supply-chain business proprietors and employees who buy local goods and services. These households rent and buy housing, eat out at local restaurants, shop, and go to the doctor. The portion of household income earned by people associated with agriculture that is then spent (and re-spent) in Wyoming supports local businesses, acting as an economic multiplier. These multipliers are counted as induced economic outputs, which add to the total economic contributions from agriculture.

= Total Economic Contribution

Money generated from direct agricultural sales in Wyoming supports both supply-chain and household purchases in the state. **Direct, indirect, and induced economic outputs combine to give us the total economic output from agriculture in the state, estimated in this report.**

Contribution analysis estimates the value of a group of industries, in this case all Wyoming industries related to agricultural production, to the state’s geographic region. This type of analysis examines how the current state of an industry supports related businesses in the local economy. The Industry Contribution Analysis model avoids double counting by restricting feedback linkages within and between the industries being analyzed ([Clouse 2021a](#)).

In this report, contribution analysis provides information about both direct farm-gate sales and how other businesses in Wyoming’s economy are supported by agriculture. The economic region considered is the state of Wyoming, with additional analyses conducted for each of Wyoming’s 23 counties. This report uses the latest available IMPLAN data (from 2021); results are adjusted for inflation and reported in 2021 dollars. This analysis includes 100% of 11 industries related to agricultural production (listed below).

Wyoming’s agricultural industries

Economic impact analysis views agricultural production in terms of industries rather than commodities (as reported in the USDA’s Wyoming Agricultural Statistics reports). Industry categories follow the North American Industry Classification system (NAICS). More details about the sub-categories included in each three-digit agricultural industry classification reported here are available through the US Census Bureau ([USCB 2023](#)). The 11 agricultural industries included in this analysis are:

- Beef cattle ranching and farming, including feedlots and dual-purpose ranching and farming
- Animal production, except cattle and poultry and eggs
- All other crop farming (including alfalfa and grass hay)
- Grain farming
- Dairy cattle and milk production
- Sugar beet farming
- Poultry and egg production
- Greenhouse, nursery, and floriculture production
- Oilseed farming
- Vegetable and melon farming
- Fruit farming

Descriptions of all other industries impacted by indirect supply-chain and induced household spending from agricultural industries follow NAICS codes as aggregated by IMPLAN ([IMPLAN 2023b](#)).

Total economic output in Wyoming related to agricultural production

In 2021, agricultural production contributed \$1.712 billion in direct economic output in Wyoming. Subsequent economic activity from indirect business-to-business supply-chain spending within the state supported by this production resulted in an additional \$476 million in economic output. Induced household-to-business spending added \$338 million. **Direct economic output plus indirect and induced outputs combined for a total economic output of \$2.526 billion related to agricultural production in Wyoming in 2021** (Table 2).

Table 2. **Direct economic output** from agricultural industry sales and resulting indirect and induced impacts, Wyoming, 2021

Impact	Output
Direct economic output (farm-gate sales)	\$1,711,847,233
Indirect output (ag supply chain sales)	\$476,105,798
Induced output (ag household spending)	\$337,602,457
Total output	\$2,525,555,488

Source: IMPLAN model, 2021 Data, \$2021

The following three sections examine each of these output layers, looking more closely at the industries that comprise—and are supported by—agricultural production in Wyoming.

Direct agricultural production output by industry

Direct output reflects the size of each of the 11 agricultural industries included in this analysis across Wyoming. Direct agricultural production can be thought of as farm-gate sales from each industry.

Beef cattle production, followed by other animal production (including sheep, hogs, feedlots, horses, bees, etc.), other crop farming (which includes alfalfa and grass hay), and grain farming are the top ranked agricultural production industries in the state. **Beef cattle ranching accounted for \$1.031 billion in direct output—nearly 60% of output for all agricultural industries** (Table 3). Overall, livestock production accounts for 77% of Wyoming’s direct economic output from agricultural industries, with crop production making up the remaining 23%.

Table 3. Agricultural industries ranked by **direct farm-gate sales**, Wyoming, 2021

Agricultural production industry	Direct output	Percent of total
Beef cattle ranching and farming, including feedlots and dual-purpose ranching and farming	\$1,013,517,000	59%
Animal production, except cattle and poultry and eggs	\$243,211,780	14%
All other crop farming (including alfalfa and grass hay)	\$219,392,952	13%
Grain farming	\$126,171,960	7%
Dairy cattle and milk production	\$41,416,000	2%
Sugar beet farming	\$28,871,000	2%
Poultry and egg production	\$28,309,810	2%
Greenhouse, nursery, and floriculture production	\$8,521,728	0.5%
Oilseed farming	\$1,230,828	0.1%
Vegetable and melon farming	\$802,582	0.05%
Fruit farming	\$401,592	0.02%
Total	\$1,711,847,233	100%

Source: IMPLAN model, 2021 Data, \$2021

The total economic contribution of agriculture to Wyoming’s economy includes farm-gate sales plus related supply-chain business purchases and household labor income spent statewide. The following sections quantify these secondary indirect and induced economic contributions to the state economy.

Indirect business-to-business output related to Wyoming agriculture

Indirect output results when income from direct farm-gate sales is re-spent in the state economy as business-to-business purchases in agricultural supply chains. Indirect outputs from agricultural production industry spending were most impactful in categories for other real estate (including agricultural property and farmland rental or leasing), other wholesale non-durable goods (for example, farm supply wholesalers, wholesale work clothes, and cattle merchant wholesalers), and truck transportation. **The \$1.712 billion in direct output from agricultural production in Wyoming supported \$476 million in indirect agricultural supply-chain spending in the state in 2021** (Table 4).

Table 4. Top 15 industries supported by **indirect spending** from agricultural production, Wyoming, 2021

Industry	Indirect output
Other real estate	\$116,925,319
Wholesale - Other non-durable goods merchant wholesalers	\$57,361,523
Truck transportation	\$44,505,367
Petroleum refineries	\$27,859,948
Support activities for agriculture and forestry	\$24,269,742
Pesticide and other agricultural chemical manufacturing	\$11,892,607
Other local government enterprises	\$10,854,472
Insurance carriers, except direct life	\$10,405,229
Monetary authorities and depository credit intermediation	\$9,182,474
Wholesale - Machinery, equipment, and supplies	\$8,785,754
Electric power transmission and distribution	\$7,869,655
Insurance agencies, brokerages, and related activities	\$7,662,997
Commercial and industrial machinery and equipment rental and leasing	\$7,532,298
Rail transportation	\$7,392,794
Other animal food manufacturing	\$7,168,100
...	
Total from 293 other industries with direct output effects	\$116,437,518
Total	\$476,105,798

Source: IMPLAN model, 2021 Data, \$2021

Induced household-to-business output related to Wyoming agriculture

Induced output results when labor income is re-spent by households working in agricultural production and supply-chain businesses. Consistent with household spending patterns in non-agricultural sectors, the largest category of induced output effects from agricultural production in Wyoming is owner-occupied dwellings, followed by other real estate, limited-service (fast food) restaurants, monetary authorities (banks and credit unions), non-store retailers (including internet retail), and hospitals. **The \$1.712 billion in direct output from agricultural production in Wyoming supported \$338 million from farm and ranch household spending in the state in 2021** (Table 5).

Table 5. Top 15 industries supported by **induced spending** from agricultural production, Wyoming, 2021

Industry	Induced output
Owner-occupied dwellings	\$52,457,802
Other real estate	\$12,925,122
Limited-service restaurants	\$12,635,510
Monetary authorities and depository credit intermediation	\$10,838,009
Retail - Non-store retailers	\$10,691,224
Hospitals	\$10,540,057
Full-service restaurants	\$9,890,629
Tenant-occupied housing	\$9,607,710
Other financial investment activities	\$9,037,344
Offices of physicians	\$8,634,321
Funds, trusts, and other financial vehicles	\$8,029,480
Retail - General merchandise stores	\$6,385,749
Other local government enterprises	\$5,897,836
Petroleum refineries	\$5,808,402
Retail - Food and beverage stores	\$5,689,800
...	
Total from 312 other industries with induced output effects	\$158,533,463
Total	\$337,602,457

Source: IMPLAN model, 2021 Data, \$2021

Employment and labor income related to Wyoming agriculture

Employment numbers described in this report include full-time, part-time, and seasonal jobs, adjusted to an industry-specific annual average that accounts for seasonality. Direct employment and labor income include jobs directly involved in agricultural production. Jobs include both wage or salary and proprietor employment. A full-

time rancher, seasonal farm worker, and part-time harvest contractor would all be included in this tally.

Indirect employment numbers reflect jobs supported by agricultural supply chains within the state. An example would include employees working for farm supply retailers or in agricultural trucking. Likewise, induced employment numbers include jobs supported by agricultural and supply-chain employee household spending, such as a local restaurant or doctor's office.

Agricultural industries contribute 14,623 direct jobs with labor income of \$554 million in Wyoming in 2021. **The total effect on the state economy, including indirect (business-to-business transactions) and induced (household spending) impacts is 20,602 jobs and \$789 million in labor income** (Table 6).

Table 6. **Employment and labor income** supported by agricultural industries, Wyoming, 2021

Impact	Employment	Labor Income
Direct (farm-gate)	14,623	\$554,062,341
Indirect (business-to-business)	3,851	\$144,628,504
Induced (household spending)	2,128	\$90,269,601
Total	20,602	\$788,960,447

Source: IMPLAN model, 2021 Data, \$2021

Top agricultural industries in Wyoming in terms of total direct, indirect, and induced employment are beef cattle ranching, contributing 7,817 jobs; other crops, contributing 7,578 jobs; and other animals, contributing 2,530 jobs in 2021 (Table 7).

Table 7. Agricultural industries ranked by **total employment**, Wyoming, 2021

Agricultural production industry	Total Employment	Labor Income
Beef cattle ranching and farming	7,817	\$321,180,733
All other crop farming	7,578	\$159,923,494
Animal production, except cattle and poultry	2,530	\$178,631,076
Grain farming	1,823	\$84,641,554
Sugar beet farming	389	\$21,530,732
Dairy cattle and milk production	203	\$9,961,005
Greenhouse, nursery, and floriculture production	133	\$5,702,297
Poultry and egg production	106	\$6,006,336
Vegetable and melon farming	11	\$438,014
Fruit farming	7	\$243,280
Oilseed farming	7	\$701,927
Total	20,602	\$788,960,447

Source: IMPLAN model, 2021 Data, \$2021

Tax impacts related to Wyoming agriculture

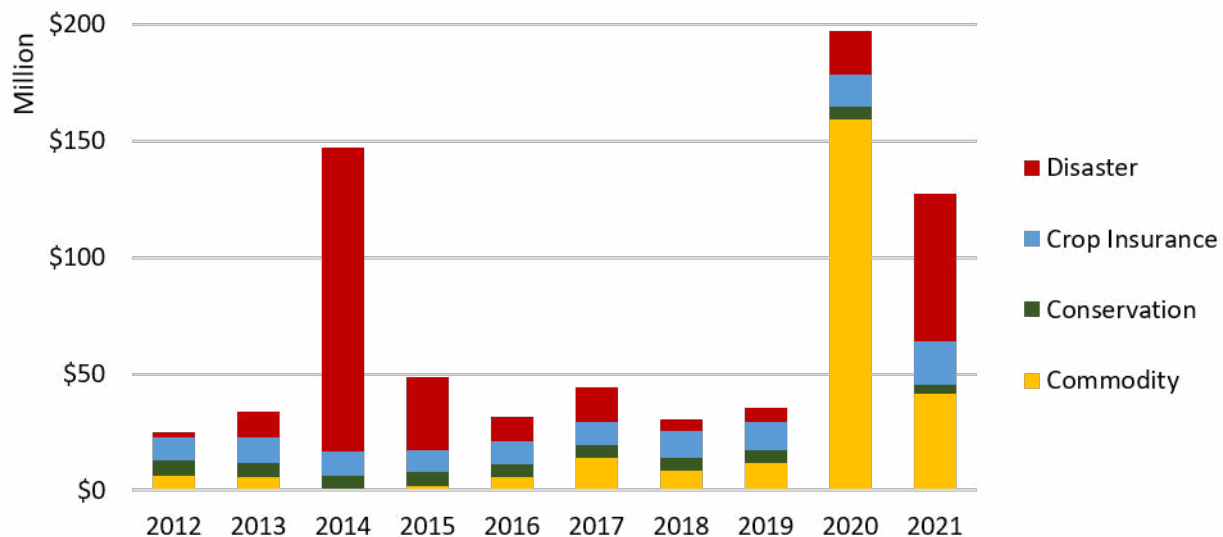
Tax impacts related to all agricultural industries in Wyoming are reported as Taxes on Production and Imports, Net of Subsidies or TOPI. IMPLAN reports TOPI as state-level tax revenue from across all levels of government (IMPLAN 2017). Note that TOPI is a net measure, so positive amounts reported as industry contributions in agricultural sectors are generally due to government transfers that are greater than taxes paid (Clouse 2021b). Table 8 reports TOPI related to direct economic output from 11 agricultural industries for Wyoming in 2021. For all industries related to agricultural production, TOPI transfers exceeded taxes paid by \$11.6 million, stemming from positive TOPI transfer amounts at the federal tax level.

Table 8. Taxes on Production and Imports Net of Subsidies (TOPI) related to agricultural production, Wyoming, 2021

Impact	Sub County General	Sub County Special Districts	County	State	Federal	Total
Direct	(\$3,332,935)	(\$29,192,195)	(\$15,927,442)	(\$68,698,911)	\$128,800,214	\$11,648,731

Source: IMPLAN model, 2021 Data, \$2021

Federal transfers totaling \$128 million were received by Wyoming agricultural producers in 2021 through disaster programs (50%), commodity programs (33%), crop insurance support (15%), and conservation programs (3%) (EWG 2021, Figure 2). It is important to note significant differences in USDA program payments over time. Over the past 10 years, relatively high program totals are reported in 2014, 2020, and 2021 (reported above).



Source: Wyoming USDA program payments, reported by the Environmental Working group <https://farm.wyg.org/regionsummary.php?fips=56000®ionname=Wyoming>

Figure 2. USDA transfers to Wyoming farms by program type, 2012–2021

Further reading

Clouse, C. 2021a. “Industry Contribution Analysis.” IMPLAN Support Site, IMPLAN Group, LLC, March 2021. <https://support.implan.com/hc/en-us/articles/1260803371809-Industry-Contribution-Analysis>

Clouse, C. 2021b. “The Curious Case of the Negative Tax: Agriculture Subsidies, Profit Losses, and Government Assistance Programs.” IMPLAN Support Site, IMPLAN Group, LLC, Updated March 2021. <https://support.implan.com/hc/en-us/articles/360036110393>

Environmental Working Group (EWG). 2021. Farm Subsidy Information. Wyoming. USDA Subsidies for farms in Wyoming 1995 through 2021. 2021. <https://farm.ewg.org/regionsummary.php?fips=56000®ionname=Wyoming>

IMPLAN. 2017. Generation and Interpretation of IMPLAN’s Tax Impact Report. <https://support.implan.com/hc/en-us/articles/115009674528-Generation-and-Interpretation-of-IMPLAN-s-Tax-Impact-Report>

IMPLAN. 2019. 546 Industries, Conversions, Bridges, & Construction. IMPLAN 546 INDUSTRIES AND COMMODITIES. <https://support.implan.com/hc/en-us/articles/15398463942683-U-S-546-Industries-Conversions-Bridges>

IMPLAN model, 2021. Data, using inputs provided by the user and IMPLAN Group LLC, IMPLAN System (data and software), 16905 Northcross Dr., Suite 120, Huntersville, NC 28078 www.IMPLAN.com.

IMPLAN 2021. Region Details. Wyoming Total Employment, using inputs provided by the user and IMPLAN Group LLC, IMPLAN System data, 16905 Northcross Dr., Suite 120, Huntersville, NC 28078 www.IMPLAN.com

IMPLAN. 2023a. Farm Data Procedures. <https://support.implan.com/hc/en-us/articles/115009505827-Farm-Data-Procedures>

IMPLAN. 2023b. U.S. 546 Industries, Conversions, & Bridges. NAICS Bridges. 2017 NAICS to IMPLAN 546 Industries. Available for download at: <https://support.implan.com/hc/en-us/articles/15398463942683-U-S-546-Industries-Conversions-Bridges>

National Agricultural Statistics Service (NASS). 2019. Census of Agriculture 2017 State and County Profiles – Wyoming. https://www.nass.usda.gov/Publications/AgCensus/2017/OnlineResources/County_Profiles/Wyoming/index.php

National Agricultural Statistics Service (NASS). 2023a. Wyoming Agricultural Statistics Bulletins, 2011 through 2022. https://www.nass.usda.gov/Statistics_by_State/Wyoming/Publications/Annual_Statistical_Bulletin/

National Agricultural Statistics Service (NASS). 2023b. 2022 State Agriculture Overview: Wyoming. https://www.nass.usda.gov/Quick_Stats/Ag_Overview/stateOverview.php?state=WYOMING

Taylor, T., T. Foulke, and R. Coupal. 2017. The Economic Importance of Wyoming Agricultural Production. Bulletin B-1314. University of Wyoming Extension, Laramie, WY. https://www.wyoextension.org/agpubs/pubs/B-1314_importance-wy-ag-for-web.pdf

US Census Bureau (USCB). 2023. North American Industry Classification System. <https://www.census.gov/naics/?58967?yearbck=2022>

Appendix: County tables

County-level industry contribution models were estimated separately using each county as the economic region of interest. Because of this, county estimates do not sum to the statewide model.

Overview of county-level economic contributions from agriculture

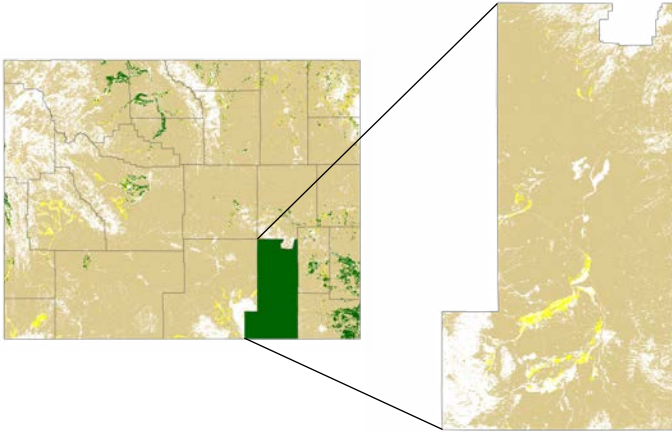
Total (direct, indirect, induced) economic output, employment, and labor income related to agricultural production by Wyoming county, 2021

Wyoming County	Population	Total Output	Total Employment	Total Labor Income
Albany County	38,031	\$74,298,491	745	\$21,487,887
Big Horn County	11,855	\$124,267,089	1,092	\$42,646,440
Campbell County	47,058	\$103,421,227	1,092	\$33,677,170
Carbon County	14,542	\$99,892,364	577	\$24,502,317
Converse County	13,786	\$89,094,948	663	\$23,206,925
Crook County	7,448	\$81,440,348	689	\$24,481,107
Fremont County	39,472	\$193,169,112	2,254	\$83,408,010
Goshen County	12,562	\$228,510,465	1,479	\$54,059,889
Hot Springs County	4,588	\$27,598,420	235	\$5,934,612
Johnson County	8,730	\$83,775,241	694	\$30,806,877
Laramie County	100,723	\$293,322,344	1,984	\$60,914,901
Lincoln County	20,660	\$83,506,878	877	\$25,650,000
Natrona County	79,601	\$84,778,880	654	\$18,660,822
Niobrara County	2,380	\$64,749,611	348	\$18,735,816
Park County	30,518	\$186,654,087	1,790	\$68,082,531
Platte County	8,645	\$135,885,688	921	\$53,569,459
Sheridan County	32,096	\$98,373,215	1,155	\$26,104,082
Sublette County	8,763	\$77,642,238	669	\$31,750,087
Sweetwater County	41,345	\$36,424,760	377	\$22,732,247
Teton County	23,287	\$16,780,348	279	\$14,003,575
Uinta County	20,712	\$56,639,227	485	\$16,627,549
Washakie County	7,719	\$83,821,694	593	\$32,035,301
Weston County	6,860	\$45,945,116	385	\$7,273,715

Sources: US Census Bureau population estimate, 2021; IMPLAN model, 2021 Data, \$2021

Note: County estimates do not sum to the statewide total as they are estimated as individual economic regions.

ALBANY COUNTY



Non-Agricultural	17%
Rangeland	81%
Pasture/Hay	1%
Cultivated Crops	0%
Total	100%

Agricultural production highlights, Albany County, WY, 2021

Farm and ranch operations¹

Number of operations	451
County total acres operated	1,406,745
Average area operated (acres per operation)	3,119

Livestock Inventory

Cattle and calves ²	53,000
Hogs and pigs ¹	163
Sheep and lambs ²	4,400
Milk cows on farms ¹	[D]
Honeybee colonies ¹	4

Crops¹ Acres harvested

Hay, including alfalfa	74,095
Wheat	8,290
Corn (grain)	[D]
Barley	0
Sugar beets	0
Dry edible beans	0
Corn (silage)	[D]

Source: ¹USDA NASS Quick Stats, 2017 Census of Agriculture: <https://quickstats.nass.usda.gov/results/625366B1-B2B1-3E99-BA2C-C808B4B5EBF1>
²USDA NASS Quick Stats, 2021 1st of January, survey data <https://quickstats.nass.usda.gov/results/401FE10A-6049-3A02-9187-E125089D045D>
 Notes: “[D]” indicates data withheld by NASS to avoid disclosing data for individual operations

Direct economic output from agricultural industry sales and resulting indirect and induced economic impacts, Albany County, WY, 2021

Impact	Output
Direct economic output (farm-gate sales)	\$54,405,947
Indirect output (ag supply chain sales)	\$9,123,786
Induced output (ag household spending)	\$10,768,757
Total output	\$74,298,491

Source: IMPLAN model, 2021 Data, \$2021

Agricultural industries ranked by **direct output**, Albany County, WY, 2021

Agricultural production industry	Direct output	Percent of total
Beef cattle ranching and farming, including feedlots and dual-purpose ranching and farming	\$41,479,436	76.24%
All other crop farming	\$6,305,985	11.59%
Animal production, except cattle and poultry and eggs	\$3,104,534	5.71%
Grain farming	\$1,642,782	3.02%
Poultry and egg production	\$1,560,834	2.87%
Greenhouse, nursery, and floriculture production	\$127,029	0.23%
Oilseed farming	\$122,445	0.23%
Vegetable and melon farming	\$55,768	0.10%
Fruit farming	\$7,135	0.01%
Dairy cattle and milk production	\$0	0.00%
Sugar cane and sugar beet farming	\$0	0.00%
Total	\$54,405,947	100%

Source: IMPLAN model, 2021 Data, \$2021

Top 15 industries supported by **indirect spending** from agricultural production, Albany County, WY, 2021

Industry	Indirect output
Other real estate	\$2,803,402
Wholesale - Other non-durable goods merchant wholesalers	\$1,009,752
Truck transportation	\$918,600
Insurance carriers, except direct life	\$644,786
Support activities for agriculture and forestry	\$398,973
Other local government enterprises	\$305,218
Monetary authorities and depository credit intermediation	\$206,025
Maintenance and repair construction of nonresidential structures	\$171,122
Rail transportation	\$163,426
Wholesale - Petroleum and petroleum products	\$154,469
Natural gas distribution	\$136,658
Full-service restaurants	\$130,160
Accounting, tax preparation, bookkeeping, and payroll services	\$107,261
Landscape and horticultural services	\$104,521
Insurance agencies, brokerages, and related activities	\$96,661
...	
Total from 154 other industries with direct output effects	\$1,869,413
Total	\$9,123,786

Source: IMPLAN model, 2021 Data, \$2021

Top 15 industries supported by **induced spending** from agricultural production, Albany County, WY, 2021

Industry	Induced output
Owner-occupied dwellings	\$1,785,908
Hospitals	\$724,902
Limited-service restaurants	\$482,490
Insurance carriers, except direct life	\$443,832
Other real estate	\$394,697
Full-service restaurants	\$378,631
Tenant-occupied housing	\$375,376
Offices of physicians	\$341,280
Monetary authorities and depository credit intermediation	\$288,737
Retail - General merchandise stores	\$223,063
Retail - Non-store retailers	\$212,632
Other local government enterprises	\$206,855
Funds, trusts, and other financial vehicles	\$199,827
Automotive repair and maintenance, except car washes	\$178,256
All other food and drinking places	\$158,288
...	
Total from 173 other industries with induced output effects	\$4,373,983
Total	\$10,768,757

Source: IMPLAN model, 2021 Data, \$2021

Employment and labor income supported by agricultural industries, Albany County, WY, 2021

Impact	Employment	Labor Income
Direct (farm-gate)	575	\$16,144,389
Indirect (business-to-business)	97	\$2,383,809
Induced (household spending)	74	\$2,959,689
Total	745	\$21,487,887

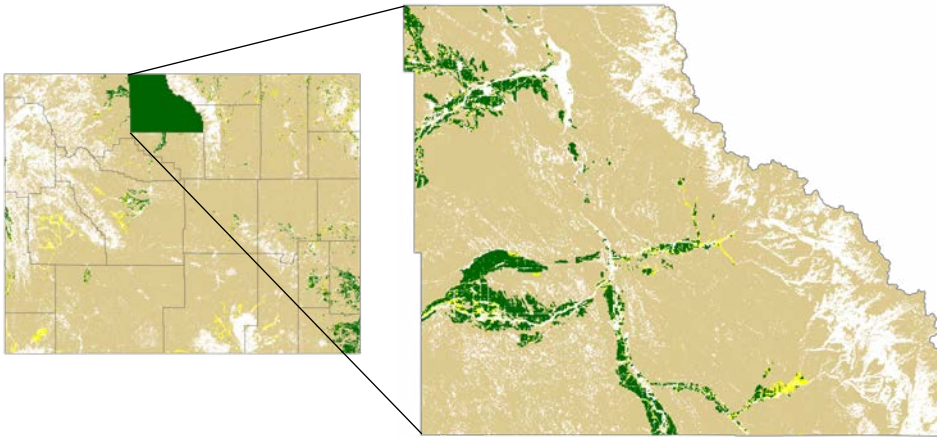
Source: IMPLAN model, 2021 Data, \$2021

Agricultural industries ranked by **total employment**, Albany County, WY, 2021

Agricultural production industry	Total Employment	Labor Income
Beef cattle ranching and farming	349	\$9,231,082
All other crop farming	308	\$7,687,616
Animal production, except cattle and poultry	46	\$2,758,547
Grain farming	29	\$1,161,301
Poultry and egg production	7	\$408,207
Greenhouse, nursery, and floriculture production	3	\$141,693
Vegetable and melon farming	1	\$31,115
Oilseed farming	1	\$62,183
Fruit farming	0	\$6,141
Dairy cattle and milk production	0	\$0
Sugar beet farming	0	\$0
Total	745	\$21,487,887

Source: IMPLAN model, 2021 Data, \$2021

BIG HORN COUNTY



Non-Agricultural	17%
Rangeland	76%
Pasture/Hay	1%
Cultivated Crops	6%
Total	100%

Agricultural production highlights, Big Horn County, WY, 2021

Farm and ranch operations¹

Number of operations	586
County total acres operated	322,241
Average area operated (acres per operation)	550

Livestock Inventory

Cattle and calves ²	42,500
Hogs and pigs ¹	389
Sheep and lambs ²	17,400
Milk cows on farms ¹	15
Honeybee colonies ¹	18

Crops¹ Acres harvested

Hay, including alfalfa	35,417
Wheat	495
Corn (grain)	4,506
Barley	18,476
Sugar beets	7,983
Dry edible beans	0
Corn (silage)	4,016

Source: ¹USDA NASS Quick Stats, 2017 Census of Agriculture: <https://quickstats.nass.usda.gov/results/625366B1-B2B1-3E99-BA2C-C808B4B5EBF1>

²USDA NASS Quick Stats, 2021 1st of January, survey data <https://quickstats.nass.usda.gov/results/401FE10A-6049-3A02-9187-E125089D045D>

Direct economic output from agricultural industry sales and resulting indirect and induced economic impacts, Big Horn County, WY, 2021

Impact	Output
Direct economic output (farm-gate sales)	\$95,677,053
Indirect output (ag supply chain sales)	\$15,995,208
Induced output (ag household spending)	\$12,594,828
Total output	\$124,267,089

Source: IMPLAN model, 2021 Data, \$2021

Agricultural industries ranked by **direct output**, Big Horn County, WY, 2021

Agricultural production industry	Direct output	Percent of total
Beef cattle ranching and farming, including feedlots and dual-purpose ranching and farming	\$33,853,810	35.38%
All other crop farming	\$23,552,409	24.62%
Grain farming	\$21,067,351	22.02%
Animal production, except cattle and poultry and eggs	\$7,500,668	7.84%
Sugar cane and sugar beet farming	\$7,224,902	7.55%
Poultry and egg production	\$2,280,989	2.38%
Greenhouse, nursery, and floriculture production	\$130,247	0.14%
Vegetable and melon farming	\$38,787	0.04%
Fruit farming	\$16,400	0.02%
Oilseed farming	\$11,492	0.01%
Dairy cattle and milk production	\$0	0.00%
Total	\$95,677,053	100.00%

Source: IMPLAN model, 2021 Data, \$2021

Top 15 industries supported by **indirect spending** from agricultural production, Big Horn County, WY, 2021

Industry	Indirect output
Wholesale - Other non-durable goods merchant wholesalers	\$4,229,313
Support activities for agriculture and forestry	\$1,699,746
Truck transportation	\$1,346,233
Other real estate	\$1,303,172
Other local government enterprises	\$561,613
Monetary authorities and depository credit intermediation	\$525,734
Wholesale - Petroleum and petroleum products	\$472,888
Maintenance and repair construction of nonresidential structures	\$464,663
Rail transportation	\$446,357
Petroleum refineries	\$394,470
Electric power transmission and distribution	\$387,386
Water, sewage, and other systems	\$342,931
Other animal food manufacturing	\$307,962
Wholesale - Machinery, equipment, and supplies	\$250,908
Retail - Gasoline stores	\$238,485
...	
Total from 127 other industries with direct output effects	\$3,023,345
Total	\$15,995,208

Source: IMPLAN model, 2021 Data, \$2021

Top 15 industries supported by **induced spending** from agricultural production, Big Horn County, WY, 2021

Industry	Induced output
Owner-occupied dwellings	\$3,122,882
Monetary authorities and depository credit intermediation	\$820,230
Retail - Non-store retailers	\$637,180
Tenant-occupied housing	\$522,403
Other financial investment activities	\$473,972
Funds, trusts, and other financial vehicles	\$355,954
Retail - Food and beverage stores	\$303,845
Wired telecommunications carriers	\$291,990
Electric power transmission and distribution	\$279,786
Full-service restaurants	\$263,043
Other local government enterprises	\$244,316
Limited-service restaurants	\$240,596
All other food and drinking places	\$211,266
Wholesale - Other non-durable goods merchant wholesalers	\$208,105
Retail - Gasoline stores	\$186,196
...	
Total from 141 other industries with induced output effects	\$4,433,064
Total	\$12,594,828

Source: IMPLAN model, 2021 Data, \$2021

Employment and labor income supported by agricultural industries, Big Horn County, WY, 2021

Impact	Employment	Labor Income
Direct (farm-gate)	817	\$34,328,411
Indirect (business-to-business)	189	\$6,174,102
Induced (household spending)	85	\$2,143,927
Total	1,092	\$42,646,440

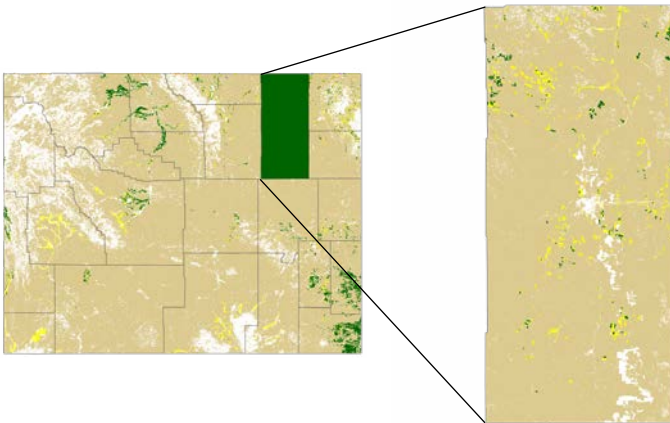
Source: IMPLAN model, 2021 Data, \$2021

Agricultural industries ranked by **total employment**, Big Horn County, WY, 2021

Agricultural production industry	Total Employment	Labor Income
All other crop farming	581	\$10,688,567
Beef cattle ranching and farming	193	\$9,923,497
Grain farming	183	\$10,589,024
Sugar beet farming	68	\$3,907,210
Animal production, except cattle and poultry	61	\$7,161,919
Poultry and egg production	6	\$298,044
Greenhouse, nursery, and floriculture production	1	\$49,004
Vegetable and melon farming	0	\$12,717
Fruit farming	0	\$7,028
Oilseed farming	0	\$9,431
Dairy cattle and milk production	0	\$0
Total	1,092	\$42,646,440

Source: IMPLAN model, 2021 Data, \$2021

CAMPBELL COUNTY



Non-Agricultural	5%
Rangeland	92%
Pasture/Hay	2%
Cultivated Crops	1%
Total	100%

Agricultural production highlights, Campbell County, WY, 2021

Farm and ranch operations¹

Number of operations	643
County total acres operated	2,901,210
Average area operated (acres per operation)	4,512

Livestock Inventory

Cattle and calves ²	78,000
Hogs and pigs ¹	91
Sheep and lambs ²	26,000
Milk cows on farms ¹	41
Honeybee colonies ¹	8

Crops¹ Acres harvested

Hay, including alfalfa	65,623
Wheat	3,422
Corn (grain)	0
Barley	509
Sugar beets	0
Dry edible beans	0
Corn (silage)	0

Source: ¹USDA NASS Quick Stats, 2017 Census of Agriculture: <https://quickstats.nass.usda.gov/results/625366B1-B2B1-3E99-BA2C-C808B4B5EBF1>

²USDA NASS Quick Stats, 2021 1st of January, survey data <https://quickstats.nass.usda.gov/results/401FE10A-6049-3A02-9187-E125089D045D>

Direct economic output from agricultural industry sales and resulting indirect and induced economic impacts, Campbell County, WY, 2021

Impact	Output
Direct economic output (farm-gate sales)	\$74,706,619
Indirect output (ag supply chain sales)	\$15,939,276
Induced output (ag household spending)	\$12,775,332
Total output	\$103,421,227

Source: IMPLAN model, 2021 Data, \$2021

Agricultural industries ranked by **direct output**, Campbell County, WY, 2021

Agricultural production industry	Direct output	Percent of total
Beef cattle ranching and farming, including feedlots and dual-purpose ranching and farming	\$60,639,100	81.17%
Animal production, except cattle and poultry and eggs	\$9,029,702	12.09%
All other crop farming	\$2,742,433	3.67%
Poultry and egg production	\$1,457,985	1.95%
Grain farming	\$818,640	1.10%
Vegetable and melon farming	\$8,145	0.01%
Greenhouse, nursery, and floriculture production	\$5,405	0.01%
Dairy cattle and milk production	\$3,967	0.01%
Fruit farming	\$1,242	0.00%
Sugar cane and sugar beet farming	\$0	0.00%
Oilseed farming	\$0	0.00%
Total	\$74,706,619	100.00%

Source: IMPLAN model, 2021 Data, \$2021

Top 15 industries supported by **indirect spending** from agricultural production, Campbell County, WY, 2021

Industry	Indirect output
Other real estate	\$3,512,782
Wholesale - Other non-durable goods merchant wholesalers	\$3,118,348
Truck transportation	\$2,901,798
Wholesale - Petroleum and petroleum products	\$424,055
Support activities for agriculture and forestry	\$423,024
Rail transportation	\$318,505
Wholesale - Machinery, equipment, and supplies	\$293,625
Electric power transmission and distribution	\$289,151
Oil and gas extraction	\$285,361
Monetary authorities and depository credit intermediation	\$262,325
Natural gas distribution	\$240,352
Services to buildings	\$216,957
Electric power generation - Fossil fuel	\$181,794
Other animal food manufacturing	\$178,131
Employment services	\$174,867
...	
Total from 154 other industries with direct output effects	\$3,118,119
Total	\$15,939,194

Source: IMPLAN model, 2021 Data, \$2021

Top 15 industries supported by **induced spending** from agricultural production, Campbell County, WY, 2021

Industry	Induced output
Owner-occupied dwellings	\$2,544,521
Limited-service restaurants	\$645,487
Retail - Non-store retailers	\$554,571
Full-service restaurants	\$521,662
Tenant-occupied housing	\$463,553
Other real estate	\$429,424
Monetary authorities and depository credit intermediation	\$351,602
Offices of physicians	\$319,812
Retail - General merchandise stores	\$318,751
Funds, trusts, and other financial vehicles	\$280,226
Automotive repair and maintenance, except car washes	\$255,301
Retail - Food and beverage stores	\$243,388
Truck transportation	\$219,938
Wired telecommunications carriers	\$218,397
All other food and drinking places	\$211,542
...	
Total from 174 other industries with induced output effects	\$5,197,159
Total	\$12,775,332

Source: IMPLAN model, 2021 Data, \$2021

Employment and labor income supported by agricultural industries, Campbell County, WY, 2021

Impact	Employment	Labor Income
Direct (farm-gate)	927	\$25,912,554
Indirect (business-to-business)	80	\$4,455,230
Induced (household spending)	85	\$3,309,386
Total	1,092	\$33,677,170

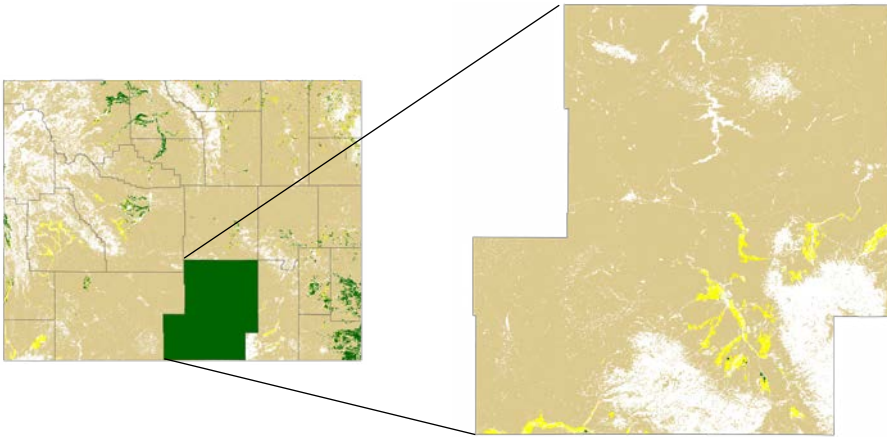
Source: IMPLAN model, 2021 Data, \$2021

Agricultural industries ranked by **total employment**, Campbell County, WY, 2021

Agricultural production industry	Total Employment	Labor Income
Beef cattle ranching and farming	708	\$19,722,431
All other crop farming	183	\$2,910,020
Animal production, except cattle and poultry	180	\$10,026,648
Grain farming	13	\$606,812
Poultry and egg production	8	\$399,422
Greenhouse, nursery, and floriculture production	0	\$5,227
Vegetable and melon farming	0	\$4,456
Fruit farming	0	\$976
Dairy cattle and milk production	0	\$1,179
Oilseed farming	0	\$0
Sugar beet farming	0	\$0
Total	1,092	\$33,677,170

Source: IMPLAN model, 2021 Data, \$2021

CARBON COUNTY



Non-Agricultural	16%
Rangeland	82%
Pasture/Hay	2%
Cultivated Crops	0%
Total	100%

Agricultural production highlights, Carbon County, WY, 2021

Farm and ranch operations¹

Number of operations	345
County total acres operated	2,811,832
Average area operated (acres per operation)	8,150

Livestock Inventory

Cattle and calves ²	95,000
Hogs and pigs ¹	185
Sheep and lambs ²	[D]
Milk cows on farms ¹	17
Honeybee colonies ¹	9

Crops¹ Acres harvested

Hay, including alfalfa	81,559
Wheat	0
Corn (grain)	[D]
Barley	0
Sugar beets	0
Dry edible beans	0
Corn (silage)	0

Source: ¹USDA NASS Quick Stats, 2017 Census of Agriculture: <https://quickstats.nass.usda.gov/results/625366B1-B2B1-3E99-BA2C-C808B4B5EBF1>

²USDA NASS Quick Stats, 2021 1st of January, survey data <https://quickstats.nass.usda.gov/results/401FE10A-6049-3A02-9187-E125089D045D>

Notes: "[D]" indicates data withheld by NASS to avoid disclosing data for individual operations

Direct economic output from agricultural industry sales and resulting indirect and induced economic impacts, Carbon County, WY, 2021

Impact	Output
Direct economic output (farm-gate sales)	\$86,705,879
Indirect output (ag supply chain sales)	\$6,571,833
Induced output (ag household spending)	\$6,614,652
Total output	\$99,892,364

Source: IMPLAN model, 2021 Data, \$2021

Agricultural industries ranked by **direct output**, Carbon County, WY, 2021

Agricultural production industry	Direct output	Percent of total
Beef cattle ranching and farming, including feedlots and dual-purpose ranching and farming	\$74,156,872	85.53%
All other crop farming	\$7,902,607	9.11%
Animal production, except cattle and poultry and eggs	\$3,922,646	4.52%
Poultry and egg production	\$492,880	0.57%
Greenhouse, nursery, and floriculture production	\$124,847	0.14%
Grain farming	\$87,438	0.10%
Vegetable and melon farming	\$18,589	0.02%
Fruit farming	\$0	0.00%
Sugar cane and sugar beet farming	\$0	0.00%
Oilseed farming	\$0	0.00%
Dairy cattle and milk production	\$0	0.00%
Total	\$86,705,879	100.00%

Source: IMPLAN model, 2021 Data, \$2021

Top 15 industries supported by **indirect spending** from agricultural production, Carbon County, WY, 2021

Industry	Indirect output
Other real estate	\$2,121,357
Petroleum refineries	\$1,307,541
Wholesale - Other non-durable goods merchant wholesalers	\$528,723
Truck transportation	\$375,615
Rail transportation	\$305,821
Monetary authorities and depository credit intermediation	\$237,266
Support activities for agriculture and forestry	\$207,529
Full-service restaurants	\$160,338
Other local government enterprises	\$88,872
Commercial and industrial machinery and equipment rental and leasing	\$85,645
Securities and commodity contracts intermediation and brokerage	\$82,285
Employment services	\$75,981
Natural gas distribution	\$75,737
Insurance agencies, brokerages, and related activities	\$70,761
Wholesale - Grocery and related product wholesalers	\$53,835
...	
Total from 126 other industries with direct output effects	\$794,527
Total	\$6,571,833

Source: IMPLAN model, 2021 Data, \$2021

Employment and labor income supported by agricultural industries, Carbon County, WY, 2021

Impact	Employment	Labor Income
Direct (farm-gate)	456	\$22,075,349
Indirect (business-to-business)	76	\$1,044,167
Induced (household spending)	46	\$1,382,801
Total	577	\$24,502,317

Source: IMPLAN model, 2021 Data, \$2021

Top 15 industries supported by **induced spending** from agricultural production, Carbon County, WY, 2021

Industry	Induced output
Owner-occupied dwellings	\$1,659,076
Limited-service restaurants	\$371,310
Tenant-occupied housing	\$349,613
Full-service restaurants	\$336,544
Funds, trusts, and other financial vehicles	\$264,096
Monetary authorities and depository credit intermediation	\$248,083
Retail - General merchandise stores	\$217,662
Retail - Food and beverage stores	\$195,895
Petroleum refineries	\$173,688
Retail - Non-store retailers	\$157,868
Other financial investment activities	\$137,774
Other real estate	\$122,496
Automotive repair and maintenance, except car washes	\$117,334
Retail - Gasoline stores	\$92,589
Outpatient care centers	\$91,464
...	
Total from 145 other industries with induced output effects	\$2,079,161
Total	\$6,614,652

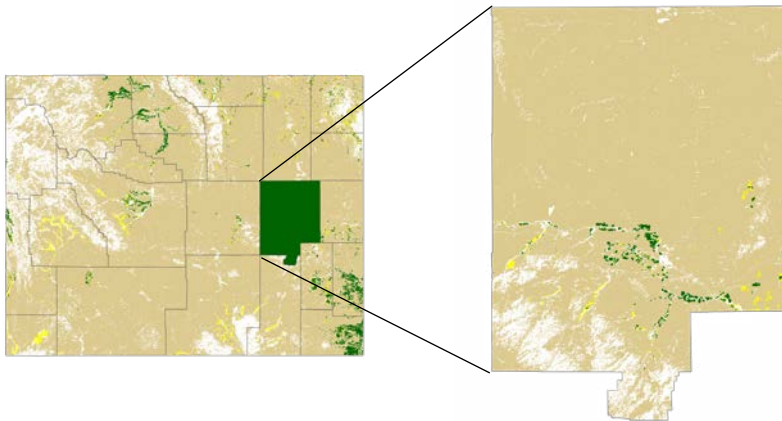
Source: IMPLAN model, 2021 Data, \$2021

Agricultural industries ranked by **total employment**, Carbon County, WY, 2021

Agricultural production industry	Total Employment	Labor Income
Beef cattle ranching and farming	294	\$14,164,808
All other crop farming	240	\$6,926,474
Animal production, except cattle and poultry	38	\$3,170,358
Greenhouse, nursery, and floriculture production	3	\$101,274
Poultry and egg production	1	\$90,667
Grain farming	1	\$41,241
Vegetable and melon farming	0	\$7,496
Sugar beet farming	0	\$0
Dairy cattle and milk production	0	\$0
Oilseed farming	0	\$0
Fruit farming	0	\$0
Total	577	\$24,502,317

Source: IMPLAN model, 2021 Data, \$2021

CONVERSE COUNTY



Non-Agricultural	9%
Rangeland	90%
Pasture/Hay	1%
Cultivated Crops	1%
Total	100%

Agricultural production highlights, Converse County, WY, 2021

Farm and ranch operations¹

Number of operations	384
County total acres operated	2,593,514
Average area operated (acres per operation)	6,754

Livestock Inventory

Cattle and calves ²	65,000
Hogs and pigs ¹	93
Sheep and lambs ²	54,000
Milk cows on farms ¹	36
Honeybee colonies ¹	0

Crops¹ Acres harvested

Hay, including alfalfa	53,704
Wheat	[D]
Corn (grain)	[D]
Barley	285
Sugar beets	0
Dry edible beans	0
Corn (silage)	1,150

Source: ¹USDA NASS Quick Stats, 2017 Census of Agriculture:
<https://quickstats.nass.usda.gov/results/625366B1-B2B1-3E99-BA2C-C808B4B5EBF1>

²USDA NASS Quick Stats, 2021 1st of January, survey data
<https://quickstats.nass.usda.gov/results/401FE10A-6049-3A02-9187-E125089D045D>

Notes: "[D]" indicates data withheld by NASS to avoid disclosing data for individual operations

Direct economic output from agricultural industry sales and resulting indirect and induced economic impacts, Converse County, WY, 2021

Impact	Output
Direct economic output (farm-gate sales)	\$73,928,830
Indirect output (ag supply chain sales)	\$9,695,912
Induced output (ag household spending)	\$5,470,206
Total output	\$89,094,948

Source: IMPLAN model, 2021 Data, \$2021

Agricultural industries ranked by **direct output**, Converse County, WY, 2021

Agricultural production industry	Direct output	Percent of total
Beef cattle ranching and farming, including feedlots and dual-purpose ranching and farming	\$51,354,681	69.47%
Animal production, except cattle and poultry and eggs	\$10,509,669	14.22%
All other crop farming	\$7,078,804	9.58%
Dairy cattle and milk production	\$2,116,218	2.86%
Grain farming	\$2,016,822	2.73%
Poultry and egg production	\$852,635	1.15%
Vegetable and melon farming	\$0	0.00%
Sugar cane and sugar beet farming	\$0	0.00%
Greenhouse, nursery, and floriculture production	\$0	0.00%
Fruit farming	\$0	0.00%
Oilseed farming	\$0	0.00%
Total	\$73,928,830	100.00%

Source: IMPLAN model, 2021 Data, \$2021

Top 15 industries supported by **indirect spending** from agricultural production, Converse County, WY, 2021

Industry	Indirect output
Other real estate	\$3,384,064
Truck transportation	\$2,271,429
Wholesale - Other non-durable goods merchant wholesalers	\$585,782
Wholesale - Wholesale electronic markets and agents and brokers	\$306,033
Support activities for agriculture and forestry	\$278,695
Rail transportation	\$259,520
Natural gas distribution	\$247,794
Other local government enterprises	\$232,103
Monetary authorities and depository credit intermediation	\$206,605
Maintenance and repair construction of nonresidential structures	\$133,524
Commercial and industrial machinery and equipment rental and leasing	\$130,338
Wholesale - Machinery, equipment, and supplies	\$122,094
Retail - Gasoline stores	\$111,098
Landscape and horticultural services	\$109,969
Full-service restaurants	\$105,874
...	
Total from 130 other industries with direct output effects	\$1,210,990
Total	\$9,695,912

Source: IMPLAN model, 2021 Data, \$2021

Employment and labor income supported by agricultural industries, Converse County, WY, 2021

Impact	Employment	Labor Income
Direct (farm-gate)	550	\$18,821,398
Indirect (business-to-business)	78	\$3,130,051
Induced (household spending)	35	\$1,255,476
Total	663	\$23,206,925

Source: IMPLAN model, 2021 Data, \$2021

Top 15 industries supported by **induced spending** from agricultural production, Converse County, WY, 2021

Industry	Induced output
Owner-occupied dwellings	\$1,462,551
Tenant-occupied housing	\$293,479
Retail - Non-store retailers	\$276,031
Limited-service restaurants	\$258,862
Full-service restaurants	\$216,332
Monetary authorities and depository credit intermediation	\$190,017
Funds, trusts, and other financial vehicles	\$189,190
Retail - Food and beverage stores	\$183,897
Other real estate	\$167,474
Automotive repair and maintenance, except car washes	\$120,366
Other local government enterprises	\$110,357
Truck transportation	\$107,938
All other food and drinking places	\$92,544
Retail - Gasoline stores	\$84,187
Maintenance and repair construction of residential structures	\$76,942
...	
Total from 147 other industries with induced output effects	\$1,640,038
Total	\$5,470,206

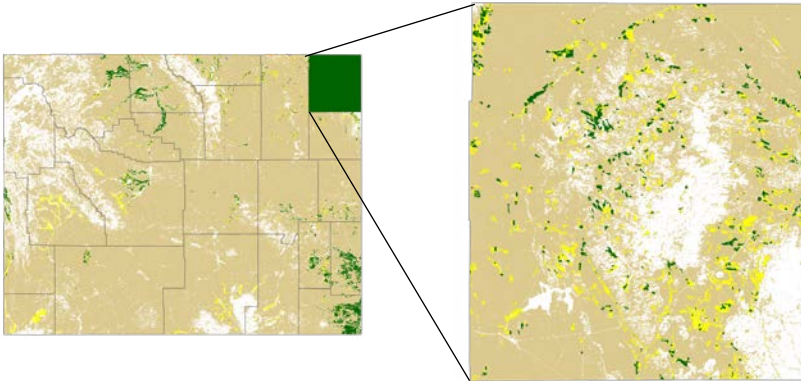
Source: IMPLAN model, 2021 Data, \$2021

Agricultural industries ranked by **total employment**, Converse County, WY, 2021

Agricultural production industry	Total Employment	Labor Income
Beef cattle ranching and farming	289	\$9,111,454
All other crop farming	238	\$5,828,044
Animal production, except cattle and poultry	102	\$6,671,151
Grain farming	22	\$1,027,111
Dairy cattle and milk production	9	\$418,028
Poultry and egg production	2	\$151,136
Fruit farming	0	\$0
Sugar beet farming	0	\$0
Vegetable and melon farming	0	\$0
Oilseed farming	0	\$0
Greenhouse, nursery, and floriculture production	0	\$0
Total	663	\$23,206,925

Source: IMPLAN model, 2021 Data, \$2021

CROOK COUNTY



Non-Agricultural	22%
Rangeland	70%
Pasture/Hay	5%
Cultivated Crops	2%
Total	100%

Agricultural production highlights, Crook County, WY, 2021

Farm and ranch operations¹

Number of operations	554
County total acres operated	1,465,641
Average area operated (acres per operation)	2,646

Livestock

Inventory

Cattle and calves ²	67,000
Hogs and pigs ¹	270
Sheep and lambs ²	11,300
Milk cows on farms ¹	21
Honeybee colonies ¹	803

Crops¹

Acres harvested

Hay, including alfalfa	75,703
Wheat	3,619
Corn (grain)	0
Barley	597
Sugar beets	0
Dry edible beans	0
Corn (silage)	0

Source: ¹USDA NASS Quick Stats, 2017 Census of Agriculture:

<https://quickstats.nass.usda.gov/results/625366B1-B2B1-3E99-BA2C-C808B4B5EBF1>

²USDA NASS Quick Stats, 2021 1st of January, survey data

<https://quickstats.nass.usda.gov/results/401FE10A-6049-3A02-9187-E125089D045D>

Direct economic output from agricultural industry sales and resulting indirect and induced economic impacts, Crook County, WY, 2021

Impact	Output
Direct economic output (farm-gate sales)	\$65,660,525
Indirect output (ag supply chain sales)	\$8,681,371
Induced output (ag household spending)	\$7,098,452
Total output	\$81,440,348

Source: IMPLAN model, 2021 Data, \$2021

Agricultural industries ranked by **direct output**, Crook County, WY, 2021

Agricultural production industry	Direct output	Percent of total
Beef cattle ranching and farming, including feedlots and dual-purpose ranching and farming	\$53,280,090	81.14%
All other crop farming	\$4,465,146	6.80%
Animal production, except cattle and poultry and eggs	\$4,377,361	6.67%
Dairy cattle and milk production	\$2,152,714	3.28%
Grain farming	\$735,419	1.12%
Poultry and egg production	\$562,391	0.86%
Greenhouse, nursery, and floriculture production	\$65,123	0.10%
Vegetable and melon farming	\$19,393	0.03%
Fruit farming	\$2,888	0.00%
Sugar cane and sugar beet farming	\$0	0.00%
Oilseed farming	\$0	0.00%
Total	\$65,660,525	100.00%

Source: IMPLAN model, 2021 Data, \$2021

Top 15 industries supported by **indirect spending** from agricultural production, Crook County, WY, 2021

Industry	Indirect output
Other real estate	\$2,692,854
Truck transportation	\$1,440,641
Wholesale - Other non-durable goods merchant wholesalers	\$1,159,679
Petroleum refineries	\$394,298
Electric power transmission and distribution	\$301,856
Wholesale - Petroleum and petroleum products	\$240,633
Oil and gas extraction	\$211,813
Maintenance and repair construction of nonresidential structures	\$201,242
Monetary authorities and depository credit intermediation	\$190,613
Wholesale - Other durable goods merchant wholesalers	\$166,050
Wholesale - Machinery, equipment, and supplies	\$164,193
Support activities for agriculture and forestry	\$119,056
Insurance agencies, brokerages, and related activities	\$112,418
Full-service restaurants	\$107,723
Commercial and industrial machinery and equipment rental and leasing	\$105,146
...	
Total from 106 other industries with direct output effects	\$1,073,154
Total	\$8,681,371

Source: IMPLAN model, 2021 Data, \$2021

Employment and labor income supported by agricultural industries, by impact, Crook County, WY, 2021

Impact	Employment	Labor Income
Direct (farm-gate)	556	\$21,939,167
Indirect (business-to-business)	87	\$1,305,135
Induced (household spending)	45	\$1,236,804
Total	689	\$24,481,107

Source: IMPLAN model, 2021 Data, \$2021

Top 15 industries supported by **induced spending** from agricultural production, Crook County, WY, 2021

Industry	Induced output
Owner-occupied dwellings	\$1,948,080
Retail - Non-store retailers	\$475,310
Other financial investment activities	\$366,062
Full-service restaurants	\$278,850
Monetary authorities and depository credit intermediation	\$248,721
Funds, trusts, and other financial vehicles	\$228,736
Other real estate	\$206,504
Retail - General merchandise stores	\$174,525
Electric power transmission and distribution	\$153,579
Automotive repair and maintenance, except car washes	\$152,287
Retail - Food and beverage stores	\$151,320
Tenant-occupied housing	\$149,511
Limited-service restaurants	\$121,982
Retail - Gasoline stores	\$110,398
All other food and drinking places	\$108,381
...	
Total from 122 other industries with induced output effects	\$2,224,206
Total	\$7,098,452

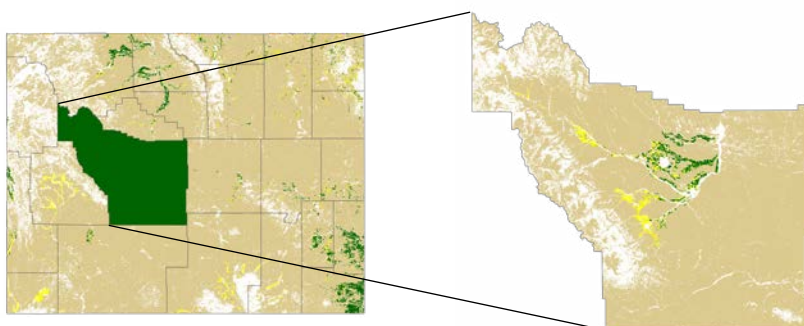
Source: IMPLAN model, 2021 Data, \$2021

Agricultural industries ranked by **total employment**, Crook County, WY, 2021

Agricultural production industry	Total Employment	Labor Income
Beef cattle ranching and farming	420	\$15,065,897
All other crop farming	188	\$3,710,090
Animal production, except cattle and poultry	56	\$4,692,193
Dairy cattle and milk production	11	\$453,620
Grain farming	10	\$395,872
Poultry and egg production	2	\$103,956
Greenhouse, nursery, and floriculture production	1	\$49,336
Vegetable and melon farming	0	\$8,339
Fruit farming	0	\$1,804
Sugar beet farming	0	\$0
Oilseed farming	0	\$0
Total	689	\$24,481,107

Source: IMPLAN model, 2021 Data, \$2021

FREMONT COUNTY



Non-Agricultural	17%
Rangeland	81%
Pasture/Hay	1%
Cultivated Crops	1%
Total	100%

Agricultural production highlights, Fremont County, WY, 2021

Farm and ranch operations¹

Number of operations	1,152
County total acres operated	1,165,154
Average area operated (acres per operation)	1,011

Livestock Inventory

Cattle and calves ²	88,000
Hogs and pigs ¹	23
Sheep and lambs ²	15,300
Milk cows on farms ¹	43
Honeybee colonies ¹	1,107

Crops¹ Acres harvested

Hay, including alfalfa	90,629
Wheat	[D]
Corn (grain)	1,067
Barley	5,075
Sugar beets	2,975
Dry edible beans	0
Corn (silage)	2,523

Source: ¹USDA NASS Quick Stats, 2017 Census of Agriculture: <https://quickstats.nass.usda.gov/results/625366B1-B2B1-3E99-BA2C-C808B4B5EBF1>

²USDA NASS Quick Stats, 2021 1st of January, survey data <https://quickstats.nass.usda.gov/results/401FE10A-6049-3A02-9187-E125089D045D>

Notes: "[D]" indicates data withheld by NASS to avoid disclosing data for individual operations

Direct economic output from agricultural industry sales and resulting indirect and induced economic impacts, Fremont County, WY, 2021

Impact	Output
Direct economic output (farm-gate sales)	\$121,348,009
Indirect output (ag supply chain sales)	\$33,067,865
Induced output (ag household spending)	\$38,753,238
Total output	\$193,169,112

Source: IMPLAN model, 2021 Data, \$2021

Agricultural industries ranked by **direct output**, Fremont County, WY, 2021

Agricultural production industry	Direct output	Percent of total
Beef cattle ranching and farming, including feedlots and dual-purpose ranching and farming	\$68,933,903	56.81%
All other crop farming	\$29,933,896	24.67%
Animal production, except cattle and poultry and eggs	\$7,416,657	6.11%
Grain farming	\$5,984,153	4.93%
Poultry and egg production	\$3,143,175	2.59%
Sugar cane and sugar beet farming	\$2,973,954	2.45%
Greenhouse, nursery, and floriculture production	\$2,821,659	2.33%
Fruit farming	\$104,745	0.09%
Vegetable and melon farming	\$31,900	0.03%
Dairy cattle and milk production	\$3,967	0.00%
Oilseed farming	\$0	0.00%
Total	\$121,348,009	100.00%

Source: IMPLAN model, 2021 Data, \$2021

Top 15 industries supported by **indirect spending** from agricultural production, Fremont County, WY, 2021

Industry	Indirect output
Other real estate	\$6,415,525
Wholesale - Other non-durable goods merchant wholesalers	\$5,716,680
Other local government enterprises	\$3,752,528
Truck transportation	\$3,715,267
Support activities for agriculture and forestry	\$1,874,158
Electric power transmission and distribution	\$737,380
Oil and gas extraction	\$717,175
Commercial and industrial machinery and equipment rental and leasing	\$705,230
Wholesale - Petroleum and petroleum products	\$674,408
Other animal food manufacturing	\$647,276
Insurance agencies, brokerages, and related activities	\$499,069
Rail transportation	\$491,291
Monetary authorities and depository credit intermediation	\$445,071
Wholesale - Machinery, equipment, and supplies	\$421,552
Insurance carriers, except direct life	\$358,864
...	
Total from 155 other industries with direct output effects	\$5,896,398
Total	\$33,067,865

Source: IMPLAN model, 2021 Data, \$2021

Top 15 industries supported by **induced spending** from agricultural production, Fremont County, WY, 2021

Industry	Induced output
Owner-occupied dwellings	\$6,297,670
Hospitals	\$2,308,037
Other local government enterprises	\$2,211,946
Limited-service restaurants	\$1,519,761
Retail - Non-store retailers	\$1,361,618
Other real estate	\$1,254,913
Offices of physicians	\$1,130,420
Full-service restaurants	\$1,041,973
Funds, trusts, and other financial vehicles	\$876,288
Monetary authorities and depository credit intermediation	\$853,617
Tenant-occupied housing	\$827,920
Automotive repair and maintenance, except car washes	\$696,805
Electric power transmission and distribution	\$696,570
Retail - General merchandise stores	\$670,685
Retail - Food and beverage stores	\$660,205
...	
Total from 176 other industries with induced output effects	\$16,344,809
Total	\$38,753,238

Source: IMPLAN model, 2021 Data, \$2021

Employment and labor income supported by agricultural industries, Fremont County, WY, 2021

Impact	Employment	Labor Income
Direct (farm-gate)	1,509	\$65,023,049
Indirect (business-to-business)	486	\$8,108,162
Induced (household spending)	259	\$10,276,798
Total	2,254	\$83,408,010

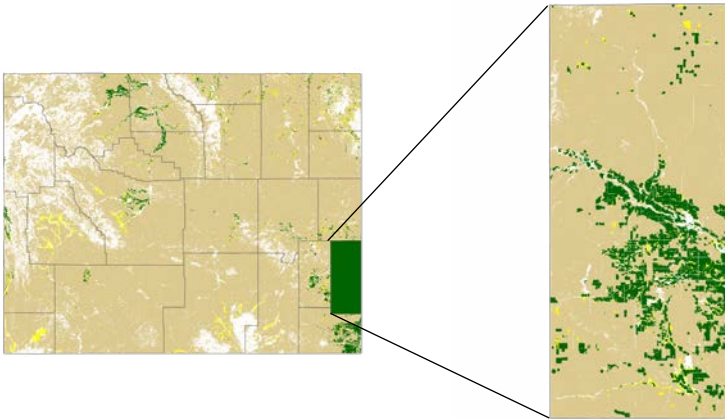
Source: IMPLAN model, 2021 Data, \$2021

Agricultural industries ranked by **total employment**, Fremont County, WY, 2021

Agricultural production industry	Total Employment	Labor Income
All other crop farming	1,196	\$20,927,286
Beef cattle ranching and farming	711	\$39,037,809
Grain farming	135	\$5,203,792
Animal production, except cattle and poultry	107	\$13,459,447
Sugar beet farming	49	\$2,412,451
Greenhouse, nursery, and floriculture production	40	\$1,618,940
Poultry and egg production	13	\$659,070
Fruit farming	2	\$70,356
Vegetable and melon farming	0	\$17,663
Dairy cattle and milk production	0	\$1,197
Oilseed farming	0	\$0
Total	2,254	\$83,408,010

Source: IMPLAN model, 2021 Data, \$2021

GOSHEN COUNTY



Non-Agricultural	4%
Rangeland	82%
Pasture/Hay	1%
Cultivated Crops	13%
Total	100%

Agricultural production highlights, Goshen County, WY, 2021

Farm and ranch operations¹

Number of operations	842
County total acres operated	1,256,099
Average area operated (acres per operation)	1,492

Livestock Inventory

Cattle and calves ²	125,000
Hogs and pigs ¹	237
Sheep and lambs ²	1,200
Milk cows on farms ¹	[D]
Honeybee colonies ¹	[D]

Crops¹ Acres harvested

Hay, including alfalfa	75,128
Wheat	13,640
Corn (grain)	29,885
Barley	1,190
Sugar beets	[D]
Dry edible beans	0
Corn (silage)	3,084

Source: ¹USDA NASS Quick Stats, 2017 Census of Agriculture: <https://quickstats.nass.usda.gov/results/625366B1-B2B1-3E99-BA2C-C808B4B5EBF1>
²USDA NASS Quick Stats, 2021 1st of January, survey data <https://quickstats.nass.usda.gov/results/401FE10A-6049-3A02-9187-E125089D045D>
 Notes: "[D]" indicates data withheld by NASS to avoid disclosing data for individual operations

Direct economic output from agricultural industry sales and resulting indirect and induced economic impacts, Goshen County, WY, 2021

Impact	Output
Direct economic output (farm-gate sales)	\$161,155,395
Indirect output (ag supply chain sales)	\$45,885,115
Induced output (ag household spending)	\$21,469,955
Total output	\$228,510,465

Source: IMPLAN model, 2021 Data, \$2021

Agricultural industries ranked by **direct output**, Goshen County, WY, 2021

Agricultural production industry	Direct output	Percent of total
Beef cattle ranching and farming, including feedlots and dual-purpose ranching and farming	\$96,163,034	59.67%
All other crop farming	\$31,065,414	19.28%
Grain farming	\$23,763,984	14.75%
Animal production, except cattle and poultry and eggs	\$2,556,620	1.59%
Dairy cattle and milk production	\$2,116,218	1.31%
Sugar cane and sugar beet farming	\$1,980,631	1.23%
Poultry and egg production	\$1,619,290	1.00%
Greenhouse, nursery, and floriculture production	\$1,476,596	0.92%
Oilseed farming	\$340,935	0.21%
Fruit farming	\$69,278	0.04%
Vegetable and melon farming	\$3,394	0.00%
Total	\$161,155,395	100.00%

Source: IMPLAN model, 2021 Data, \$2021

Top 15 industries supported by **indirect spending** from agricultural production, Goshen County, WY, 2021

Industry	Indirect output
Other real estate	\$13,570,485
Wholesale - Other non-durable goods merchant wholesalers	\$10,556,330
Truck transportation	\$4,085,890
Support activities for agriculture and forestry	\$2,438,697
Electric power transmission and distribution	\$1,182,550
Monetary authorities and depository credit intermediation	\$1,112,891
Other local government enterprises	\$1,005,643
Maintenance and repair construction of nonresidential structures	\$921,095
Natural gas distribution	\$783,186
Wholesale - Machinery, equipment, and supplies	\$746,395
Rail transportation	\$567,587
Legal services	\$553,706
Services to buildings	\$530,274
Petroleum refineries	\$447,706
Insurance agencies, brokerages, and related activities	\$439,673
...	
Total from 121 other industries with direct output effects	\$6,943,006
Total	\$45,885,115

Source: IMPLAN model, 2021 Data, \$2021

Top 15 industries supported by **induced spending** from agricultural production, Goshen County, WY, 2021

Industry	Induced output
Owner-occupied dwellings	\$4,195,635
Hospitals	\$2,046,884
Monetary authorities and depository credit intermediation	\$951,153
Limited-service restaurants	\$832,113
Other real estate	\$783,271
Funds, trusts, and other financial vehicles	\$622,361
Retail - Non-store retailers	\$574,479
Offices of physicians	\$549,834
Electric power transmission and distribution	\$456,626
Tenant-occupied housing	\$448,376
Full-service restaurants	\$442,627
Wholesale - Other non-durable goods merchant wholesalers	\$416,734
Automotive repair and maintenance, except car washes	\$408,985
Other local government enterprises	\$401,743
Securities and commodity contracts intermediation and brokerage	\$337,678
...	
Total from 139 other industries with induced output effects	\$8,001,457
Total	\$21,469,955

Source: IMPLAN model, 2021 Data, \$2021

Employment and labor income supported by agricultural industries, Goshen County, WY, 2021

Impact	Employment	Labor Income
Direct (farm-gate)	982	\$35,125,905
Indirect (business-to-business)	350	\$13,564,089
Induced (household spending)	146	\$5,369,895
Total	1,479	\$54,059,889

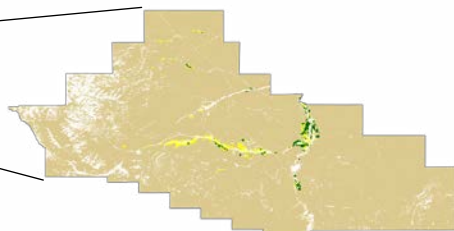
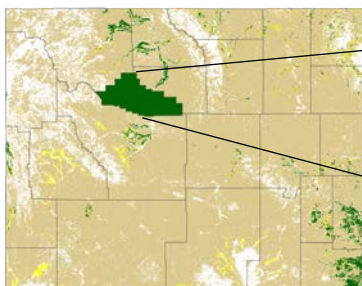
Source: IMPLAN model, 2021 Data, \$2021

Agricultural industries ranked by **total employment**, Goshen County, WY, 2021

Agricultural production industry	Total Employment	Labor Income
All other crop farming	668	\$13,530,917
Beef cattle ranching and farming	507	\$23,702,643
Grain farming	238	\$12,547,608
Sugar beet farming	19	\$1,035,062
Animal production, except cattle and poultry	18	\$1,852,346
Greenhouse, nursery, and floriculture production	14	\$529,961
Dairy cattle and milk production	8	\$378,159
Poultry and egg production	5	\$233,502
Oilseed farming	1	\$221,182
Fruit farming	1	\$27,446
Vegetable and melon farming	0	\$1,064
Total	1,479	\$54,059,889

Source: IMPLAN model, 2021 Data, \$2021

HOT SPRINGS COUNTY



Non-Agricultural	9%
Rangeland	90%
Pasture/Hay	1%
Cultivated Crops	0%
Total	100%

Agricultural production highlights, Hot Springs County, WY, 2021

Farm and ranch operations¹

Number of operations	223
County total acres operated	528,123
Average area operated (acres per operation)	2,368

Livestock Inventory

Cattle and calves ²	21,000
Hogs and pigs ¹	15
Sheep and lambs ²	6,700
Milk cows on farms ¹	[D]
Honeybee colonies ¹	6

Crops¹ Acres harvested

Hay, including alfalfa	10,002
Wheat	[D]
Corn (grain)	[D]
Barley	[D]
Sugar beets	0
Dry edible beans	0
Corn (silage)	0

Source: ¹USDA NASS Quick Stats, 2017 Census of Agriculture: <https://quickstats.nass.usda.gov/results/625366B1-B2B1-3E99-BA2C-C808B4B5EBF1>

²USDA NASS Quick Stats, 2021 1st of January, survey data <https://quickstats.nass.usda.gov/results/401FE10A-6049-3A02-9187-E125089D045D>

Notes: “[D]” indicates data withheld by NASS to avoid disclosing data for individual operations

Direct economic output from agricultural industry sales and resulting indirect and induced economic impacts, Hot Springs County, WY, 2021

Impact	Output
Direct economic output (farm-gate sales)	\$22,704,981
Indirect output (ag supply chain sales)	\$3,269,856
Induced output (ag household spending)	\$1,623,583
Total output	\$27,598,420

Source: IMPLAN model, 2021 Data, \$2021

Agricultural industries ranked by direct output, Hot Springs County, WY, 2021

Agricultural production industry	Direct output	Percent of total
Beef cattle ranching and farming, including feedlots and dual-purpose ranching and farming	\$16,239,602	71.52%
Animal production, except cattle and poultry and eggs	\$4,279,793	18.85%
All other crop farming	\$1,110,927	4.89%
Poultry and egg production	\$596,445	2.63%
Grain farming	\$439,793	1.94%
Vegetable and melon farming	\$37,179	0.16%
Fruit farming	\$1,242	0.01%
Sugar cane and sugar beet farming	\$0	0.00%
Greenhouse, nursery, and floriculture production	\$0	0.00%
Dairy cattle and milk production	\$0	0.00%
Oilseed farming	\$0	0.00%
Total	\$22,704,981	100.00%

Source: IMPLAN model, 2021 Data, \$2021

Top 15 industries supported by **indirect spending** from agricultural production, Hot Springs County, WY, 2021

Industry	Indirect output
Other real estate	\$942,339
Truck transportation	\$826,420
Petroleum refineries	\$202,831
Wholesale - Other non-durable goods merchant wholesalers	\$162,725
Oil and gas extraction	\$126,644
Electric power transmission and distribution	\$89,111
Rail transportation	\$87,619
Monetary authorities and depository credit intermediation	\$73,825
Insurance carriers, except direct life	\$67,140
Scenic and sightseeing transportation and support activities for transportation	\$65,490
Employment services	\$65,333
Maintenance and repair construction of nonresidential structures	\$52,102
Accounting, tax preparation, bookkeeping, and payroll services	\$42,655
Securities and commodity contracts intermediation and brokerage	\$37,704
Insurance agencies, brokerages, and related activities	\$34,003
...	
Total from 103 other industries with direct output effects	\$393,913
Total	\$3,269,856

Source: IMPLAN model, 2021 Data, \$2021

Top 15 industries supported by **induced spending** from agricultural production, Hot Springs County, WY, 2021

Industry	Induced output
Owner-occupied dwellings	\$382,323
Limited-service restaurants	\$107,717
Retail - Non-store retailers	\$71,052
Monetary authorities and depository credit intermediation	\$69,038
Other real estate	\$55,067
Funds, trusts, and other financial vehicles	\$45,011
Full-service restaurants	\$41,831
Electric power transmission and distribution	\$38,525
Truck transportation	\$35,693
Retail - General merchandise stores	\$33,958
Insurance carriers, except direct life	\$32,168
Automotive repair and maintenance, except car washes	\$27,945
Securities and commodity contracts intermediation and brokerage	\$27,179
Nursing and community care facilities	\$26,047
Retail - Food and beverage stores	\$25,826
...	
Total from 122 other industries with induced output effects	\$604,203
Total	\$1,623,583

Source: IMPLAN model, 2021 Data, \$2021

Employment and labor income supported by agricultural industries, Hot Springs County, WY, 2021

Impact	Employment	Labor Income
Direct (farm-gate)	205	\$4,788,886
Indirect (business-to-business)	19	\$785,149
Induced (household spending)	11	\$360,576
Total	235	\$5,934,612

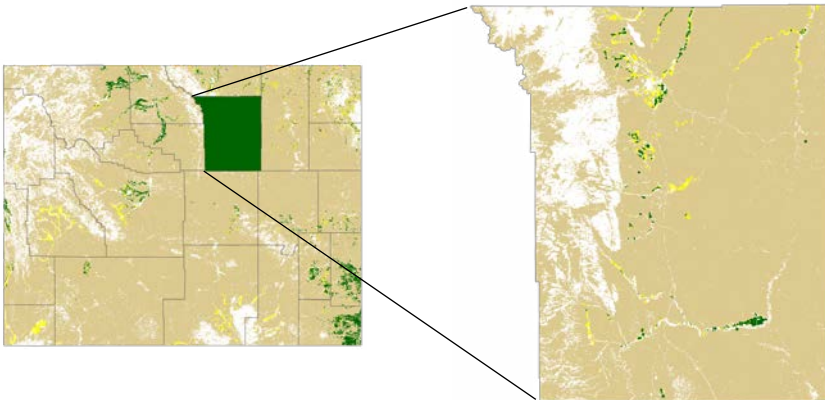
Source: IMPLAN model, 2021 Data, \$2021

Agricultural industries ranked by **total employment**, Hot Springs County, WY, 2021

Agricultural production industry	Total Employment	Labor Income
Beef cattle ranching and farming	134	\$2,612,310
Animal production, except cattle and poultry	48	\$2,353,190
All other crop farming	46	\$703,700
Grain farming	4	\$166,878
Poultry and egg production	2	\$86,999
Vegetable and melon farming	0	\$10,987
Fruit farming	0	\$548
Dairy cattle and milk production	0	\$0
Sugar beet farming	0	\$0
Oilseed farming	0	\$0
Greenhouse, nursery, and floriculture production	0	\$0
Total	235	\$5,934,612

Source: IMPLAN model, 2021 Data, \$2021

JOHNSON COUNTY



Non-Agricultural	16%
Rangeland	82%
Pasture/Hay	1%
Cultivated Crops	1%
Total	100%

Agricultural production highlights, Johnson County, WY, 2021

Farm and ranch operations¹

Number of operations	384
County total acres operated	1,974,363
Average area operated (acres per operation)	5,142

Livestock

Inventory

Cattle and calves ²	63,000
Hogs and pigs ¹	183
Sheep and lambs ²	34,000
Milk cows on farms ¹	12
Honeybee colonies ¹	[D]

Crops¹

Acres harvested

Hay, including alfalfa	29,667
Wheat	[D]
Corn (grain)	0
Barley	0
Sugar beets	0
Dry edible beans	0
Corn (silage)	[D]

Source: ¹USDA NASS Quick Stats, 2017 Census of Agriculture:

<https://quickstats.nass.usda.gov/results/625366B1-B2B1-3E99-BA2C-C808B4B5EBF1>

²USDA NASS Quick Stats, 2021 1st of January, survey data

<https://quickstats.nass.usda.gov/results/401FE10A-6049-3A02-9187-E125089D045D>

Notes: "[D]" indicates data withheld by NASS to avoid disclosing data for individual operations

Direct economic output from agricultural industry sales and resulting indirect and induced economic impacts, Johnson County, WY, 2021

Impact	Output
Direct economic output (farm-gate sales)	\$61,465,551
Indirect output (ag supply chain sales)	\$11,450,819
Induced output (ag household spending)	\$10,858,871
Total output	\$83,775,241

Source: IMPLAN model, 2021 Data, \$2021

Agricultural industries ranked by **direct output**, Johnson County, WY, 2021

Agricultural production industry	Direct output	Percent of total
Beef cattle ranching and farming, including feedlots and dual-purpose ranching and farming	\$48,810,952	79.41%
Animal production, except cattle and poultry and eggs	\$7,948,854	12.93%
All other crop farming	\$3,668,205	5.97%
Poultry and egg production	\$751,285	1.22%
Grain farming	\$215,782	0.35%
Greenhouse, nursery, and floriculture production	\$62,423	0.10%
Fruit farming	\$8,051	0.01%
Sugar cane and sugar beet farming	\$0	0.00%
Vegetable and melon farming	\$0	0.00%
Dairy cattle and milk production	\$0	0.00%
Oilseed farming	\$0	0.00%
Total	\$61,465,551	100.00%

Source: IMPLAN model, 2021 Data, \$2021

Top 15 industries supported by **indirect spending** from agricultural production, Johnson County, WY, 2021

Industry	Indirect output
Other real estate	\$3,696,974
Support activities for agriculture and forestry	\$1,228,422
Truck transportation	\$905,305
Wholesale - Other non-durable goods merchant wholesalers	\$873,213
Pesticide and other agricultural chemical manufacturing	\$459,020
Petroleum refineries	\$428,495
Monetary authorities and depository credit intermediation	\$379,616
Electric power transmission and distribution	\$354,271
Wholesale - Petroleum and petroleum products	\$299,366
Oil and gas extraction	\$242,092
Insurance carriers, except direct life	\$195,114
Maintenance and repair construction of nonresidential structures	\$184,170
Commercial and industrial machinery and equipment rental and leasing	\$169,983
Other local government enterprises	\$157,327
Landscape and horticultural services	\$155,819
...	
Total from 125 other industries with direct output effects	\$1,721,633
Total	\$11,450,819

Source: IMPLAN model, 2021 Data, \$2021

Top 15 industries supported by **induced spending** from agricultural production, Johnson County, WY, 2021

Industry	Induced output
Owner-occupied dwellings	\$2,288,663
Other financial investment activities	\$588,330
Other real estate	\$570,385
Monetary authorities and depository credit intermediation	\$541,433
Retail - Non-store retailers	\$527,762
Limited-service restaurants	\$384,212
Full-service restaurants	\$379,602
Funds, trusts, and other financial vehicles	\$362,491
Retail - Food and beverage stores	\$266,165
Automotive repair and maintenance, except car washes	\$222,334
Electric power transmission and distribution	\$217,609
Religious organizations	\$203,027
Other local government enterprises	\$186,103
Insurance carriers, except direct life	\$157,009
Individual and family services	\$133,853
...	
Total from 141 other industries with induced output effects	\$3,829,893
Total	\$10,858,871

Source: IMPLAN model, 2021 Data, \$2021

Employment and labor income supported by agricultural industries, Johnson County, WY, 2021

Impact	Employment	Labor Income
Direct (farm-gate)	477	\$24,696,482
Indirect (business-to-business)	138	\$3,746,741
Induced (household spending)	79	\$2,363,654
Total	694	\$30,806,877

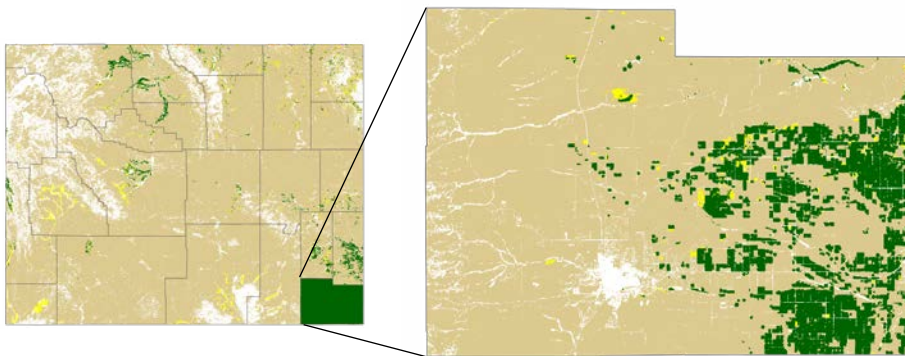
Source: IMPLAN model, 2021 Data, \$2021

Agricultural industries ranked by **total employment**, Johnson County, WY, 2021

Agricultural production industry	Total Employment	Labor Income
Beef cattle ranching and farming	397	\$15,799,322
All other crop farming	173	\$5,075,535
Animal production, except cattle and poultry	114	\$9,408,121
Grain farming	5	\$224,204
Poultry and egg production	3	\$215,447
Greenhouse, nursery, and floriculture production	2	\$75,382
Fruit farming	0	\$8,865
Vegetable and melon farming	0	\$0
Sugar beet farming	0	\$0
Dairy cattle and milk production	0	\$0
Oilseed farming	0	\$0
Total	694	\$30,806,877

Source: IMPLAN model, 2021 Data, \$2021

LARAMIE COUNTY



Non-Agricultural	5%
Rangeland	80%
Pasture/Hay	1%
Cultivated Crops	14%
Total	100%

Agricultural production highlights, Laramie County, WY, 2021

Farm and ranch operations¹

Number of operations	999
County total acres operated	1,629,655
Average area operated (acres per operation)	1,631

Livestock Inventory

Cattle and calves ²	80,000
Hogs and pigs ¹	[D]
Sheep and lambs ²	28,000
Milk cows on farms ¹	[D]
Honeybee colonies ¹	77

Crops¹ Acres harvested

Hay, including alfalfa	57,476
Wheat	73,299
Corn (grain)	17,181
Barley	1,128
Sugar beets	[D]
Dry edible beans	0
Corn (silage)	3,713

Source: ¹USDA NASS Quick Stats, 2017 Census of Agriculture: <https://quickstats.nass.usda.gov/results/625366B1-B2B1-3E99-BA2C-C808B4B5EBF1>

²USDA NASS Quick Stats, 2021 1st of January, survey data <https://quickstats.nass.usda.gov/results/401FE10A-6049-3A02-9187-E125089D045D>

Notes: "[D]" indicates data withheld by NASS to avoid disclosing data for individual operations

Direct economic output from agricultural industry sales and resulting indirect and induced economic impacts, Laramie County, WY, 2021

Impact	Output
Direct economic output (farm-gate sales)	\$210,328,709
Indirect output (ag supply chain sales)	\$53,148,606
Induced output (ag household spending)	\$29,845,029
Total output	\$293,322,344

Source: IMPLAN model, 2021 Data, \$2021

Agricultural industries ranked by **direct output**, Laramie County, WY, 2021

Agricultural production industry	Direct output	Percent of total
Animal production, except cattle and poultry and eggs	\$103,276,825	49.10%
Beef cattle ranching and farming, including feedlots and dual-purpose ranching and farming	\$62,425,518	29.68%
Grain farming	\$27,890,460	13.26%
All other crop farming	\$11,115,270	5.28%
Dairy cattle and milk production	\$2,116,218	1.01%
Poultry and egg production	\$1,912,390	0.91%
Greenhouse, nursery, and floriculture production	\$756,286	0.36%
Oilseed farming	\$443,259	0.21%
Sugar cane and sugar beet farming	\$247,579	0.12%
Vegetable and melon farming	\$130,125	0.06%
Fruit farming	\$14,779	0.01%
Total	\$210,328,709	100.00%

Source: IMPLAN model, 2021 Data, \$2021

Top 15 industries supported by **indirect spending** from agricultural production, Laramie County, WY, 2021

Industry	Indirect output
Other real estate	\$13,583,982
Wholesale - Other non-durable goods merchant wholesalers	\$7,188,948
Truck transportation	\$4,235,414
Petroleum refineries	\$3,097,221
Support activities for agriculture and forestry	\$2,489,314
Insurance carriers, except direct life	\$2,028,362
Other local government enterprises	\$1,953,843
Insurance agencies, brokerages, and related activities	\$1,172,727
Monetary authorities and depository credit intermediation	\$1,172,549
Electric power transmission and distribution	\$1,052,571
Employment services	\$922,874
Wholesale - Machinery, equipment, and supplies	\$881,620
Commercial and industrial machinery and equipment rental and leasing	\$876,227
Maintenance and repair construction of nonresidential structures	\$795,679
Rail transportation	\$737,984
...	
Total from 203 other industries with direct output effects	\$10,959,293
Total	\$53,148,606

Source: IMPLAN model, 2021 Data, \$2021

Employment and labor income supported by agricultural industries, Laramie County, WY, 2021

Impact	Employment	Labor Income
Direct (farm-gate)	1,454	\$37,239,988
Indirect (business-to-business)	343	\$15,822,498
Induced (household spending)	187	\$7,852,415
Total	1,984	\$60,914,901

Source: IMPLAN model, 2021 Data, \$2021

Top 15 industries supported by **induced spending** from agricultural production, Laramie County, WY, 2021

Industry	Induced output
Owner-occupied dwellings	\$4,391,522
Limited-service restaurants	\$1,170,021
Other real estate	\$1,156,777
Monetary authorities and depository credit intermediation	\$1,072,037
Insurance carriers, except direct life	\$941,557
Other financial investment activities	\$932,134
Retail - Non-store retailers	\$894,926
Tenant-occupied housing	\$857,035
Offices of physicians	\$840,577
Full-service restaurants	\$752,201
Funds, trusts, and other financial vehicles	\$718,510
Other local government enterprises	\$697,123
Retail - General merchandise stores	\$578,360
Securities and commodity contracts intermediation and brokerage	\$577,107
Insurance agencies, brokerages, and related activities	\$572,064
...	
Total from 222 other industries with induced output effects	\$13,693,077
Total	\$29,845,029

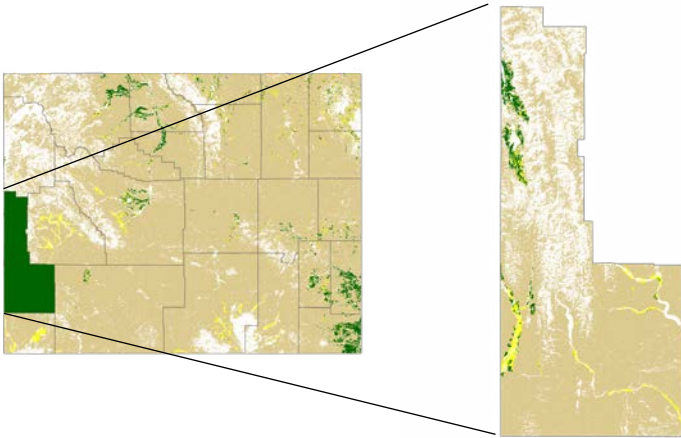
Source: IMPLAN model, 2021 Data, \$2021

Agricultural industries ranked by **total employment**, Laramie County, WY, 2021

Agricultural production industry	Total Employment	Labor Income
Animal production, except cattle and poultry	855	\$31,478,880
Beef cattle ranching and farming	427	\$8,500,619
All other crop farming	348	\$6,004,901
Grain farming	323	\$13,532,821
Greenhouse, nursery, and floriculture production	9	\$355,084
Dairy cattle and milk production	9	\$382,830
Poultry and egg production	6	\$321,457
Sugar beet farming	3	\$168,095
Oilseed farming	2	\$126,057
Vegetable and melon farming	1	\$38,265
Fruit farming	0	\$5,893
Total	1,984	\$60,914,901

Source: IMPLAN model, 2021 Data, \$2021

LINCOLN COUNTY



Non-Agricultural	27%
Rangeland	69%
Pasture/Hay	2%
Cultivated Crops	2%
Total	100%

Agricultural production highlights, Lincoln County, WY, 2021

Farm and ranch operations¹

Number of operations	698
County total acres operated	364,892
Average area operated (acres per operation)	523

Livestock Inventory

Cattle and calves ²	43,000
Hogs and pigs ¹	322
Sheep and lambs ²	18,600
Milk cows on farms ¹	609
Honeybee colonies ¹	316

Crops¹ Acres harvested

Hay, including alfalfa	75,287
Wheat	0
Corn (grain)	[D]
Barley	3,502
Sugar beets	0
Dry edible beans	0
Corn (silage)	[D]

Source: ¹USDA NASS Quick Stats, 2017 Census of Agriculture: <https://quickstats.nass.usda.gov/results/625366B1-B2B1-3E99-BA2C-C808B4B5EBF1>

²USDA NASS Quick Stats, 2021 1st of January, survey data <https://quickstats.nass.usda.gov/results/401FE10A-6049-3A02-9187-E125089D045D>

Notes: "[D]" indicates data withheld by NASS to avoid disclosing data for individual operations

Direct economic output from agricultural industry sales and resulting indirect and induced economic impacts, Lincoln County, WY, 2021

Impact	Output
Direct economic output (farm-gate sales)	\$63,070,668
Indirect output (ag supply chain sales)	\$11,258,577
Induced output (ag household spending)	\$9,177,634
Total output	\$83,506,878

Source: IMPLAN model, 2021 Data, \$2021

Agricultural industries ranked by **direct output**, Lincoln County, WY, 2021

Agricultural production industry	Direct output	Percent of total
Beef cattle ranching and farming, including feedlots and dual-purpose ranching and farming	\$33,574,129	53.23%
All other crop farming	\$13,206,343	20.94%
Animal production, except cattle and poultry and eggs	\$10,148,310	16.09%
Dairy cattle and milk production	\$3,316,136	5.26%
Grain farming	\$1,321,406	2.10%
Poultry and egg production	\$1,246,265	1.98%
Greenhouse, nursery, and floriculture production	\$187,270	0.30%
Vegetable and melon farming	\$55,768	0.09%
Fruit farming	\$15,040	0.02%
Sugar cane and sugar beet farming	\$0	0.00%
Oilseed farming	\$0	0.00%
Total	\$63,070,668	100.00%

Source: IMPLAN model, 2021 Data, \$2021

Top 15 industries supported by **indirect spending** from agricultural production, Lincoln County, WY, 2021

Industry	Indirect output
Other real estate	\$3,333,757
Truck transportation	\$1,915,989
Oil and gas extraction	\$751,936
Wholesale - Other non-durable goods merchant wholesalers	\$453,600
Support activities for agriculture and forestry	\$363,356
Wholesale - Petroleum and petroleum products	\$308,950
Maintenance and repair construction of nonresidential structures	\$299,218
Natural gas distribution	\$290,867
Monetary authorities and depository credit intermediation	\$203,658
Insurance agencies, brokerages, and related activities	\$200,899
Other local government enterprises	\$196,005
Services to buildings	\$179,076
Rail transportation	\$137,883
Accounting, tax preparation, bookkeeping, and payroll services	\$136,047
Landscape and horticultural services	\$134,204
...	
Total from 139 other industries with direct output effects	\$2,353,132
Total	\$11,258,577

Source: IMPLAN model, 2021 Data, \$2021

Top 15 industries supported by **induced spending** from agricultural production, Lincoln County, WY, 2021

Industry	Induced output
Owner-occupied dwellings	\$2,019,761
Retail - Non-store retailers	\$474,405
Other real estate	\$336,251
Other financial investment activities	\$301,901
Limited-service restaurants	\$277,377
Monetary authorities and depository credit intermediation	\$267,028
Retail - Food and beverage stores	\$266,218
Funds, trusts, and other financial vehicles	\$235,115
Truck transportation	\$181,420
Wired telecommunications carriers	\$178,766
Full-service restaurants	\$171,456
Other local government enterprises	\$166,861
Oil and gas extraction	\$162,310
All other food and drinking places	\$161,611
Tenant-occupied housing	\$157,995
...	
Total from 157 other industries with induced output effects	\$3,819,198
Total	\$9,177,634

Source: IMPLAN model, 2021 Data, \$2021

Employment and labor income supported by agricultural industries, Lincoln County, WY, 2021

Impact	Employment	Labor Income
Direct (farm-gate)	694	\$21,244,150
Indirect (business-to-business)	122	\$2,593,253
Induced (household spending)	61	\$1,812,597
Total	877	\$25,650,000

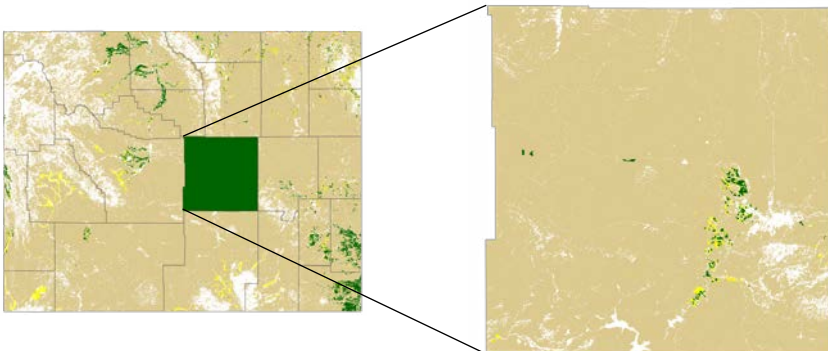
Source: IMPLAN model, 2021 Data, \$2021

Agricultural industries ranked by **total employment**, Lincoln County, WY, 2021

Agricultural production industry	Total Employment	Labor Income
All other crop farming	462	\$5,625,672
Beef cattle ranching and farming	271	\$9,579,515
Animal production, except cattle and poultry	105	\$9,046,537
Grain farming	19	\$633,513
Dairy cattle and milk production	13	\$532,698
Poultry and egg production	3	\$141,945
Greenhouse, nursery, and floriculture production	2	\$67,296
Vegetable and melon farming	1	\$17,116
Fruit farming	0	\$5,709
Sugar beet farming	0	\$0
Oilseed farming	0	\$0
Total	877	\$25,650,000

Source: IMPLAN model, 2021 Data, \$2021

NATRONA COUNTY



Non-Agricultural	5%
Rangeland	94%
Pasture/Hay	0%
Cultivated Crops	0%
Total	100%

Agricultural production highlights, Natrona County, WY, 2021

Farm and ranch operations¹

Number of operations	430
County total acres operated	1,933,264
Average area operated (acres per operation)	4,496

Livestock Inventory

Cattle and calves ²	55,000
Hogs and pigs ¹	127
Sheep and lambs ²	16,500
Milk cows on farms ¹	29
Honeybee colonies ¹	255

Crops¹ Acres harvested

Hay, including alfalfa	27,604
Wheat	675
Corn (grain)	1,805
Barley	602
Sugar beets	0
Dry edible beans	0
Corn (silage)	[D]

Source: ¹USDA NASS Quick Stats, 2017 Census of Agriculture: <https://quickstats.nass.usda.gov/results/625366B1-B2B1-3E99-BA2C-C808B4B5EBF1>

²USDA NASS Quick Stats, 2021 1st of January, survey data <https://quickstats.nass.usda.gov/results/401FE10A-6049-3A02-9187-E125089D045D>

Notes: "[D]" indicates data withheld by NASS to avoid disclosing data for individual operations

Direct economic output from agricultural industry sales and resulting indirect and induced economic impacts, Natrona County, WY, 2021

Impact	Output
Direct economic output (farm-gate sales)	\$60,771,132
Indirect output (ag supply chain sales)	\$15,839,542
Induced output (ag household spending)	\$8,168,206
Total output	\$84,778,880

Source: IMPLAN model, 2021 Data, \$2021

Agricultural industries ranked by direct output, Natrona County Wyoming, 2021

Agricultural production industry	Direct output	Percent of total
Beef cattle ranching and farming, including feedlots and dual-purpose ranching and farming	\$43,227,137	71.13%
Animal production, except cattle and poultry and eggs	\$5,227,332	8.60%
All other crop farming	\$4,243,794	6.98%
Dairy cattle and milk production	\$4,232,437	6.96%
Poultry and egg production	\$2,471,355	4.07%
Grain farming	\$1,125,882	1.85%
Greenhouse, nursery, and floriculture production	\$203,933	0.34%
Fruit farming	\$20,673	0.03%
Vegetable and melon farming	\$18,589	0.03%
Oilseed farming	\$0	0.00%
Sugar cane and sugar beet farming	\$0	0.00%
Total	\$60,771,132	100.00%

Source: IMPLAN model, 2021 Data, \$2021

Top 15 industries supported by **indirect spending** from agricultural production, Natrona County, WY, 2021

Industry	Indirect output
Other real estate	\$3,756,150
Truck transportation	\$2,301,042
Wholesale - Other non-durable goods merchant wholesalers	\$2,092,716
Petroleum refineries	\$1,099,682
Support activities for agriculture and forestry	\$351,969
Wholesale - Petroleum and petroleum products	\$335,903
Wholesale - Machinery, equipment, and supplies	\$296,129
Commercial and industrial machinery and equipment rental and leasing	\$292,620
Electric power transmission and distribution	\$289,354
Natural gas distribution	\$265,689
Monetary authorities and depository credit intermediation	\$262,319
Other local government enterprises	\$247,726
Oil and gas extraction	\$247,346
Services to buildings	\$245,134
Maintenance and repair construction of nonresidential structures	\$188,602
...	
Total from 191 other industries with direct output effects	\$3,567,162
Total	\$15,839,542

Source: IMPLAN model, 2021 Data, \$2021

Top 15 industries supported by **induced spending** from agricultural production, Natrona County, WY, 2021

Industry	Induced output
Owner-occupied dwellings	\$1,115,239
Hospitals	\$685,230
Other real estate	\$352,499
Limited-service restaurants	\$304,177
Full-service restaurants	\$245,541
Tenant-occupied housing	\$239,496
Offices of physicians	\$215,488
Monetary authorities and depository credit intermediation	\$211,610
Retail - Non-store retailers	\$196,189
Funds, trusts, and other financial vehicles	\$183,575
Other financial investment activities	\$150,147
Retail - General merchandise stores	\$149,216
Petroleum refineries	\$141,318
Other local government enterprises	\$124,565
Automotive repair and maintenance, except car washes	\$123,123
...	
Total from 212 other industries with induced output effects	\$3,730,793
Total	\$8,168,206

Source: IMPLAN model, 2021 Data, \$2021

Employment and labor income supported by agricultural industries, Natrona County, WY, 2021

Impact	Employment	Labor Income
Direct (farm-gate)	488	\$11,819,564
Indirect (business-to-business)	113	\$4,464,496
Induced (household spending)	53	\$2,376,762
Total	654	\$18,660,822

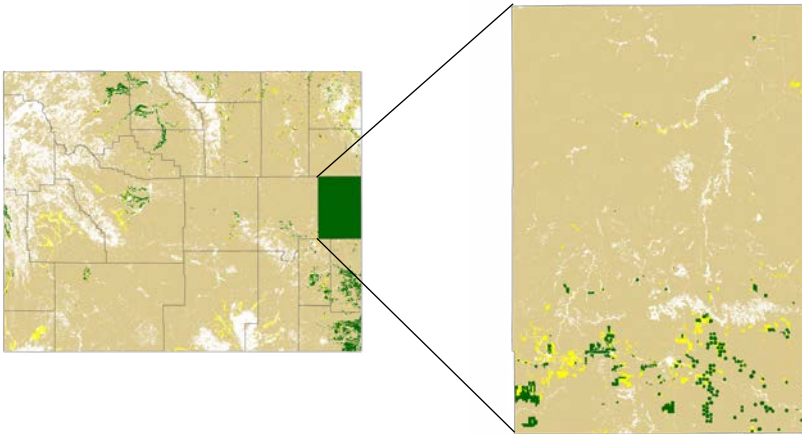
Source: IMPLAN model, 2021 Data, \$2021

Agricultural industries ranked by **total employment**, Natrona County, WY, 2021

Agricultural production industry	Total Employment	Labor Income
Beef cattle ranching and farming	347	\$9,716,230
All other crop farming	182	\$3,234,829
Animal production, except cattle and poultry	65	\$3,405,518
Dairy cattle and milk production	25	\$966,545
Grain farming	19	\$678,137
Poultry and egg production	10	\$500,679
Greenhouse, nursery, and floriculture production	5	\$139,720
Fruit farming	1	\$11,620
Vegetable and melon farming	0	\$7,545
Sugar beet farming	0	\$0
Oilseed farming	0	\$0
Total	654	\$18,660,822

Source: IMPLAN model, 2021 Data, \$2021

NIOBRARA COUNTY



Non-Agricultural	4%
Rangeland	93%
Pasture/Hay	1%
Cultivated Crops	2%
Total	100%

Agricultural production highlights, Niobrara County, WY, 2021

Farm and ranch operations¹

Number of operations	242
County total acres operated	1,277,446
Average area operated (acres per operation)	5,279

Livestock Inventory

Cattle and calves ²	59,000
Hogs and pigs ¹	[D]
Sheep and lambs ²	3,600
Milk cows on farms ¹	9
Honeybee colonies ¹	0

Crops¹ Acres harvested

Hay, including alfalfa	23,553
Wheat	2,796
Corn (grain)	[D]
Barley	0
Sugar beets	0
Dry edible beans	0
Corn (silage)	[D]

Source: ¹USDA NASS Quick Stats, 2017 Census of Agriculture: <https://quickstats.nass.usda.gov/results/625366B1-B2B1-3E99-BA2C-C808B4B5EBF1>

²USDA NASS Quick Stats, 2021 1st of January, survey data <https://quickstats.nass.usda.gov/results/401FE10A-6049-3A02-9187-E125089D045D>

Notes: "[D]" indicates data withheld by NASS to avoid disclosing data for individual operations

Direct economic output from agricultural industry sales and resulting indirect and induced economic impacts, Niobrara County, WY, 2021

Impact	Output
Direct economic output (farm-gate sales)	\$54,135,032
Indirect output (ag supply chain sales)	\$5,955,677
Induced output (ag household spending)	\$4,658,901
Total output	\$64,749,611

Source: IMPLAN model, 2021 Data, \$2021

Agricultural industries ranked by **direct output**, Niobrara County, WY, 2021

Agricultural production industry	Direct output	Percent of total
Beef cattle ranching and farming, including feedlots and dual-purpose ranching and farming	\$45,931,930	84.85%
Animal production, except cattle and poultry and eggs	\$4,300,388	7.94%
All other crop farming	\$2,789,392	5.15%
Grain farming	\$759,532	1.40%
Poultry and egg production	\$335,200	0.62%
Vegetable and melon farming	\$18,589	0.03%
Sugar cane and sugar beet farming	\$0	0.00%
Dairy cattle and milk production	\$0	0.00%
Fruit farming	\$0	0.00%
Greenhouse, nursery, and floriculture production	\$0	0.00%
Oilseed farming	\$0	0.00%
Total	\$54,135,032	100.00%

Source: IMPLAN model, 2021 Data, \$2021

Top 15 industries supported by **indirect spending** from agricultural production, Niobrara County, WY, 2021

Industry	Indirect output
Other real estate	\$1,938,796
Truck transportation	\$1,107,841
Wholesale - Other non-durable goods merchant wholesalers	\$519,309
Oil and gas extraction	\$343,077
Natural gas distribution	\$222,234
Rail transportation	\$222,152
Commercial and industrial machinery and equipment rental and leasing	\$188,066
Electric power transmission and distribution	\$168,016
Monetary authorities and depository credit intermediation	\$147,720
Securities and commodity contracts intermediation and brokerage	\$91,049
Maintenance and repair construction of nonresidential structures	\$86,437
Scenic and sightseeing transportation and support activities for transportation	\$80,831
Local government electric utilities	\$74,748
Wholesale - Other durable goods merchant wholesalers	\$68,866
Retail - Gasoline stores	\$64,651
...	
Total from 85 other industries with direct output effects	\$631,884
Total	\$5,955,678

Source: IMPLAN model, 2021 Data, \$2021

Employment and labor income supported by agricultural industries, Niobrara County, WY, 2021

Impact	Employment	Labor Income
Direct (farm-gate)	283	\$16,814,678
Indirect (business-to-business)	34	\$1,099,070
Induced (household spending)	31	\$822,068
Total	348	\$18,735,816

Source: IMPLAN model, 2021 Data, \$2021

Top 15 industries supported by **induced spending** from agricultural production, Niobrara County, WY, 2021

Industry	Induced output
Owner-occupied dwellings	\$1,242,516
Retail - Non-store retailers	\$317,276
Limited-service restaurants	\$295,364
Funds, trusts, and other financial vehicles	\$211,361
Monetary authorities and depository credit intermediation	\$175,731
Retail - General merchandise stores	\$144,761
Retail - Food and beverage stores	\$137,957
Other real estate	\$124,478
Tenant-occupied housing	\$120,850
Wired telecommunications carriers	\$109,081
All other food and drinking places	\$98,044
Securities and commodity contracts intermediation and brokerage	\$96,845
Electric power transmission and distribution	\$93,155
Retail - Gasoline stores	\$73,565
Natural gas distribution	\$69,060
...	
Total from 100 other industries with induced output effects	\$1,348,856
Total	\$4,658,901

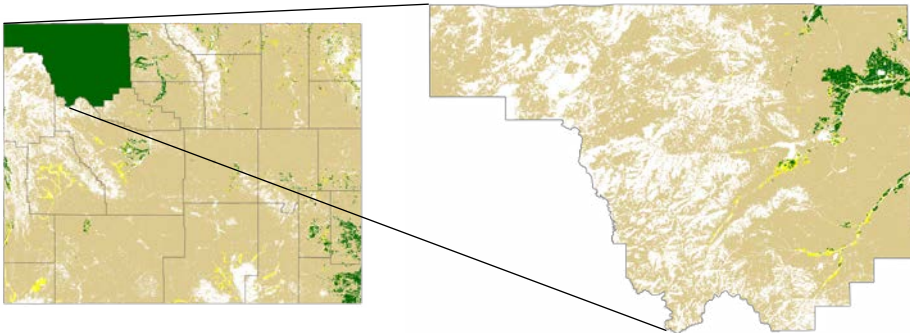
Source: IMPLAN model, 2021 Data, \$2021

Agricultural industries ranked by **total employment**, Niobrara County, WY, 2021

Agricultural production industry	Total Employment	Labor Income
Beef cattle ranching and farming	227	\$12,388,437
All other crop farming	77	\$1,740,828
Animal production, except cattle and poultry	38	\$4,188,122
Grain farming	6	\$364,481
Poultry and egg production	1	\$47,333
Vegetable and melon farming	0	\$6,616
Sugar beet farming	0	\$0
Dairy cattle and milk production	0	\$0
Fruit farming	0	\$0
Oilseed farming	0	\$0
Greenhouse, nursery, and floriculture production	0	\$0
Total	348	\$18,735,816

Source: IMPLAN model, 2021 Data, \$2021

PARK COUNTY



Non-Agricultural	30%
Rangeland	67%
Pasture/Hay	1%
Cultivated Crops	2%
Total	100%

Agricultural production highlights, Park County, WY, 2021

Farm and ranch operations¹

Number of operations	1,008
County total acres operated	929,926
Average area operated (acres per operation)	923

Livestock Inventory

Cattle and calves ²	41,500
Hogs and pigs ¹	293
Sheep and lambs ²	18,300
Milk cows on farms ¹	[D]
Honeybee colonies ¹	84

Crops¹ Acres harvested

Hay, including alfalfa	45,607
Wheat	1,566
Corn (grain)	4,311
Barley	19,091
Sugar beets	10,240
Dry edible beans	0
Corn (silage)	2,612

Source: ¹USDA NASS Quick Stats, 2017 Census of Agriculture: <https://quickstats.nass.usda.gov/results/625366B1-B2B1-3E99-BA2C-C808B4B5EBF1>
²USDA NASS Quick Stats, 2021 1st of January, survey data <https://quickstats.nass.usda.gov/results/401FE10A-6049-3A02-9187-E125089D045D>
 Notes: "[D]" indicates data withheld by NASS to avoid disclosing data for individual operations

Direct economic output from agricultural industry sales and resulting indirect and induced economic impacts, Park County, WY, 2021

Impact	Output
Direct economic output (farm-gate sales)	\$114,212,843
Indirect output (ag supply chain sales)	\$43,708,147
Induced output (ag household spending)	\$28,733,097
Total output	\$186,654,087

Source: IMPLAN model, 2021 Data, \$2021

Agricultural industries ranked by direct output, Park County, WY, 2021

Agricultural production industry	Direct output	Percent of total
Beef cattle ranching and farming, including feedlots and dual-purpose ranching and farming	\$32,464,490	28.42%
All other crop farming	\$22,852,015	20.01%
Grain farming	\$19,721,718	17.27%
Dairy cattle and milk production	\$16,929,747	14.82%
Sugar cane and sugar beet farming	\$9,222,640	8.07%
Animal production, except cattle and poultry and eggs	\$9,165,215	8.02%
Poultry and egg production	\$2,955,527	2.59%
Greenhouse, nursery, and floriculture production	\$461,267	0.40%
Oilseed farming	\$313,174	0.27%
Fruit farming	\$66,643	0.06%
Vegetable and melon farming	\$60,406	0.05%
Total	\$114,212,843	100.00%

Source: IMPLAN model, 2021 Data, \$2021

Top 15 industries supported by **indirect spending** from agricultural production, Park County, WY, 2021

Industry	Indirect output
Other real estate	\$12,669,746
Wholesale - Other non-durable goods merchant wholesalers	\$8,660,352
Support activities for agriculture and forestry	\$4,262,253
Maintenance and repair construction of nonresidential structures	\$1,336,312
Truck transportation	\$1,316,709
Electric power transmission and distribution	\$1,152,487
Monetary authorities and depository credit intermediation	\$1,017,603
Other local government enterprises	\$948,841
Wholesale - Machinery, equipment, and supplies	\$865,613
Commercial and industrial machinery and equipment rental and leasing	\$811,677
Insurance carriers, except direct life	\$717,103
Insurance agencies, brokerages, and related activities	\$612,490
Accounting, tax preparation, bookkeeping, and payroll services	\$603,410
Oil and gas extraction	\$505,484
Employment services	\$384,010
...	
Total from 163 other industries with direct output effects	\$7,844,056
Total	\$43,708,147

Source: IMPLAN model, 2021 Data, \$2021

Employment and labor income supported by agricultural industries, Park County, WY, 2021

Impact	Employment	Labor Income
Direct (farm-gate)	1,142	\$42,517,189
Indirect (business-to-business)	450	\$17,880,212
Induced (household spending)	198	\$7,685,130
Total	1,790	\$68,082,531

Source: IMPLAN model, 2021 Data, \$2021

Top 15 industries supported by **induced spending** from agricultural production, Park County, WY, 2021

Industry	Induced output
Owner-occupied dwellings	\$4,549,572
Hospitals	\$1,602,789
Other real estate	\$1,315,359
Monetary authorities and depository credit intermediation	\$1,159,191
Retail - Non-store retailers	\$1,116,037
Limited-service restaurants	\$927,085
Offices of physicians	\$910,317
Full-service restaurants	\$842,933
Funds, trusts, and other financial vehicles	\$765,792
Retail - General merchandise stores	\$624,271
Retail - Food and beverage stores	\$622,237
Electric power transmission and distribution	\$533,223
Automotive repair and maintenance, except car washes	\$515,651
Securities and commodity contracts intermediation and brokerage	\$495,866
Wholesale - Other non-durable goods merchant wholesalers	\$476,693
...	
Total from 184 other industries with induced output effects	\$12,276,081
Total	\$28,733,097

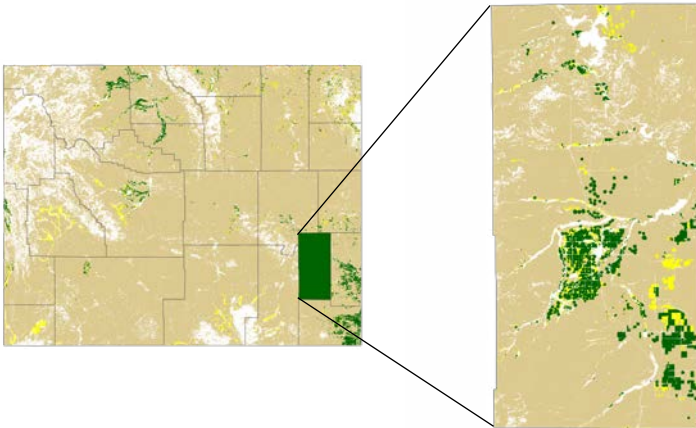
Source: IMPLAN model, 2021 Data, \$2021

Agricultural industries ranked by **total employment**, Park County, WY, 2021

Agricultural production industry	Total Employment	Labor Income
All other crop farming	819	\$16,402,582
Grain farming	344	\$17,059,824
Beef cattle ranching and farming	273	\$11,444,365
Sugar beet farming	142	\$7,901,861
Animal production, except cattle and poultry	104	\$9,477,585
Dairy cattle and milk production	88	\$4,548,555
Poultry and egg production	11	\$629,721
Greenhouse, nursery, and floriculture production	6	\$267,484
Oilseed farming	2	\$275,815
Fruit farming	1	\$44,172
Vegetable and melon farming	1	\$30,566
Total	1,790	\$68,082,531

Source: IMPLAN model, 2021 Data, \$2021

PLATTE COUNTY



Non-Agricultural	9%
Rangeland	83%
Pasture/Hay	2%
Cultivated Crops	6%
Total	100%

Agricultural production highlights, Platte County, WY, 2021

Farm and ranch operations¹

Number of operations	505
County total acres operated	1,046,754
Average area operated (acres per operation)	2,073

Livestock

Inventory

Cattle and calves ²	64,000
Hogs and pigs ¹	[D]
Sheep and lambs ²	700
Milk cows on farms ¹	[D]
Honeybee colonies ¹	14

Crops¹

Acres harvested

Hay, including alfalfa	34,576
Wheat	7,591
Corn (grain)	6,606
Barley	1,017
Sugar beets	2,241
Dry edible beans	0
Corn (silage)	4,300

Source: ¹USDA NASS Quick Stats, 2017 Census of Agriculture:
<https://quickstats.nass.usda.gov/results/625366B1-B2B1-3E99-BA2C-C808B4B5EBF1>

²USDA NASS Quick Stats, 2021 1st of January, survey data
<https://quickstats.nass.usda.gov/results/401FE10A-6049-3A02-9187-E125089D045D>

Notes: "[D]" indicates data withheld by NASS to avoid disclosing data for individual operations

Direct economic output from agricultural industry sales and resulting indirect and induced economic impacts, Platte County, WY, 2021

Impact	Output
Direct economic output (farm-gate sales)	\$99,068,862
Indirect output (ag supply chain sales)	\$16,786,662
Induced output (ag household spending)	\$20,030,164
Total output	\$135,885,688

Source: IMPLAN model, 2021 Data, \$2021

Agricultural industries ranked by **direct output**, Platte County Wyoming, 2021

Agricultural production industry	Direct output	Percent of total
Beef cattle ranching and farming, including feedlots and dual-purpose ranching and farming	\$49,649,569	50.12%
Animal production, except cattle and poultry and eggs	\$20,112,899	20.30%
All other crop farming	\$10,323,541	10.42%
Grain farming	\$9,740,213	9.83%
Dairy cattle and milk production	\$6,348,655	6.41%
Sugar cane and sugar beet farming	\$2,304,530	2.33%
Poultry and egg production	\$531,296	0.54%
Fruit farming	\$26,906	0.03%
Greenhouse, nursery, and floriculture production	\$18,018	0.02%
Vegetable and melon farming	\$13,235	0.01%
Oilseed farming	\$0	0.00%
Total	\$99,068,862	100.00%

Source: IMPLAN model, 2021 Data, \$2021

Top 15 industries supported by **indirect spending** from agricultural production, Platte County, WY, 2021

Industry	Indirect output
Other real estate	\$5,877,581
Wholesale - Other non-durable goods merchant wholesalers	\$2,618,971
Truck transportation	\$1,666,904
Electric power transmission and distribution	\$513,927
Natural gas distribution	\$488,168
Monetary authorities and depository credit intermediation	\$472,257
Support activities for agriculture and forestry	\$401,925
Rail transportation	\$396,326
Maintenance and repair construction of nonresidential structures	\$321,026
Petroleum refineries	\$312,029
Electric power generation - Fossil fuel	\$308,054
Wholesale - Machinery, equipment, and supplies	\$292,269
Commercial and industrial machinery and equipment rental and leasing	\$270,139
Retail - Gasoline stores	\$169,011
Management of companies and enterprises	\$166,704
...	
Total from 112 other industries with direct output effects	\$2,511,370
Total	\$16,786,662

Source: IMPLAN model, 2021 Data, \$2021

Top 15 industries supported by **induced spending** from agricultural production, Platte County, WY, 2021

Industry	Induced output
Owner-occupied dwellings	\$4,412,135
Hospitals	\$2,306,081
Monetary authorities and depository credit intermediation	\$793,614
Limited-service restaurants	\$748,222
Retail - Non-store retailers	\$675,392
Other real estate	\$674,810
Full-service restaurants	\$609,816
Retail - Food and beverage stores	\$562,191
Other financial investment activities	\$391,349
Electric power transmission and distribution	\$363,227
All other food and drinking places	\$360,209
Funds, trusts, and other financial vehicles	\$353,947
Car washes	\$297,342
Retail - Motor vehicle and parts dealers	\$289,220
Automotive repair and maintenance, except car washes	\$272,844
...	
Total from 129 other industries with induced output effects	\$6,919,765
Total	\$20,030,164

Source: IMPLAN model, 2021 Data, \$2021

Employment and labor income supported by agricultural industries, Platte County, WY, 2021

Impact	Employment	Labor Income
Direct (farm-gate)	651	\$44,711,290
Indirect (business-to-business)	134	\$4,001,908
Induced (household spending)	136	\$4,856,261
Total	921	\$53,569,459

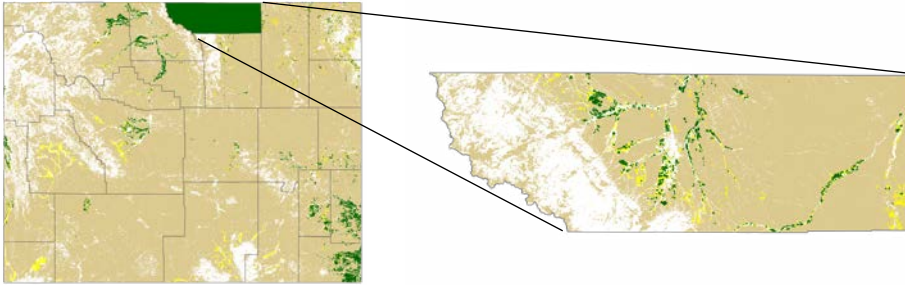
Source: IMPLAN model, 2021 Data, \$2021

Agricultural industries ranked by **total employment**, Platte County, WY, 2021

Agricultural production industry	Total Employment	Labor Income
Beef cattle ranching and farming	293	\$16,806,167
All other crop farming	282	\$5,672,395
Animal production, except cattle and poultry	193	\$22,679,456
Grain farming	98	\$5,471,129
Sugar beet farming	29	\$1,551,858
Dairy cattle and milk production	23	\$1,282,725
Poultry and egg production	1	\$79,302
Fruit farming	0	\$12,900
Greenhouse, nursery, and floriculture production	0	\$8,485
Vegetable and melon farming	0	\$5,042
Oilseed farming	0	\$0
Total	921	\$53,569,459

Source: IMPLAN model, 2021 Data, \$2021

SHERIDAN COUNTY



Non-Agricultural	24%
Rangeland	71%
Pasture/Hay	2%
Cultivated Crops	2%
Total	100%

Agricultural production highlights, Sheridan County, WY, 2021

Farm and ranch operations¹

Number of operations	833
County total acres operated	1,213,820
Average area operated (acres per operation)	1,457

Livestock Inventory

Cattle and calves ²	65,000
Hogs and pigs ¹	41
Sheep and lambs ²	4,800
Milk cows on farms ¹	22
Honeybee colonies ¹	949

Crops¹ Acres harvested

Hay, including alfalfa	66,525
Wheat	227
Corn (grain)	158
Barley	0
Sugar beets	[D]
Dry edible beans	0
Corn (silage)	[D]

Source: ¹USDA NASS Quick Stats, 2017 Census of Agriculture: <https://quickstats.nass.usda.gov/results/625366B1-B2B1-3E99-BA2C-C808B4B5EBF1>

²USDA NASS Quick Stats, 2021 1st of January, survey data <https://quickstats.nass.usda.gov/results/401FE10A-6049-3A02-9187-E125089D045D>

Notes: "[D]" indicates data withheld by NASS to avoid disclosing data for individual operations

Direct economic output from agricultural industry sales and resulting indirect and induced economic impacts, Sheridan County, WY, 2021

Impact	Output
Direct economic output (farm-gate sales)	\$67,484,836
Indirect output (ag supply chain sales)	\$19,342,324
Induced output (ag household spending)	\$11,546,055
Total output	\$98,373,215

Source: IMPLAN model, 2021 Data, \$2021

Agricultural industries ranked by **direct output**, Sheridan County, WY, 2021

Agricultural production industry	Direct output	Percent of total
Beef cattle ranching and farming, including feedlots and dual-purpose ranching and farming	\$50,385,973	74.66%
All other crop farming	\$9,365,694	13.88%
Animal production, except cattle and poultry and eggs	\$4,271,774	6.33%
Poultry and egg production	\$1,761,139	2.61%
Greenhouse, nursery, and floriculture production	\$998,772	1.48%
Grain farming	\$408,629	0.61%
Sugar cane and sugar beet farming	\$247,579	0.37%
Fruit farming	\$34,417	0.05%
Vegetable and melon farming	\$10,859	0.02%
Oilseed farming	\$0	0.00%
Dairy cattle and milk production	\$0	0.00%
Total	\$67,484,836	100.00%

Source: IMPLAN model, 2021 Data, \$2021

Top 15 industries supported by **indirect spending** from agricultural production, Sheridan County, WY, 2021

Industry	Indirect output
Other real estate	\$4,574,116
Wholesale - Other non-durable goods merchant wholesalers	\$3,553,737
Support activities for agriculture and forestry	\$1,917,885
Truck transportation	\$1,650,524
Monetary authorities and depository credit intermediation	\$475,462
Wholesale - Petroleum and petroleum products	\$363,581
Petroleum refineries	\$357,918
Maintenance and repair construction of nonresidential structures	\$352,080
Management of companies and enterprises	\$313,825
Wholesale - Machinery, equipment, and supplies	\$311,281
Accounting, tax preparation, bookkeeping, and payroll services	\$280,256
Rail transportation	\$275,517
Insurance agencies, brokerages, and related activities	\$265,097
Insurance carriers, except direct life	\$226,850
Electric power transmission and distribution	\$199,752
...	
Total from 153 other industries with direct output effects	\$4,224,442
Total	\$19,342,324

Source: IMPLAN model, 2021 Data, \$2021

Employment and labor income supported by agricultural industries, Sheridan County, WY, 2021

Impact	Employment	Labor Income
Direct (farm-gate)	852	\$16,172,271
Indirect (business-to-business)	226	\$7,258,622
Induced (household spending)	77	\$2,673,189
Total	1,155	\$26,104,082

Source: IMPLAN model, 2021 Data, \$2021

Top 15 industries supported by **induced spending** from agricultural production, Sheridan County, WY, 2021

Industry	Induced output
Owner-occupied dwellings	\$1,803,857
Other financial investment activities	\$544,032
Other real estate	\$531,144
Monetary authorities and depository credit intermediation	\$491,609
Retail - Non-store retailers	\$416,359
Limited-service restaurants	\$407,972
Tenant-occupied housing	\$395,811
Funds, trusts, and other financial vehicles	\$297,806
Full-service restaurants	\$285,783
Retail - General merchandise stores	\$241,107
Offices of physicians	\$202,121
Securities and commodity contracts intermediation and brokerage	\$197,684
Automotive repair and maintenance, except car washes	\$194,663
Wired telecommunications carriers	\$178,823
Retail - Food and beverage stores	\$167,262
...	
Total from 172 other industries with induced output effects	\$5,190,023
Total	\$11,546,055

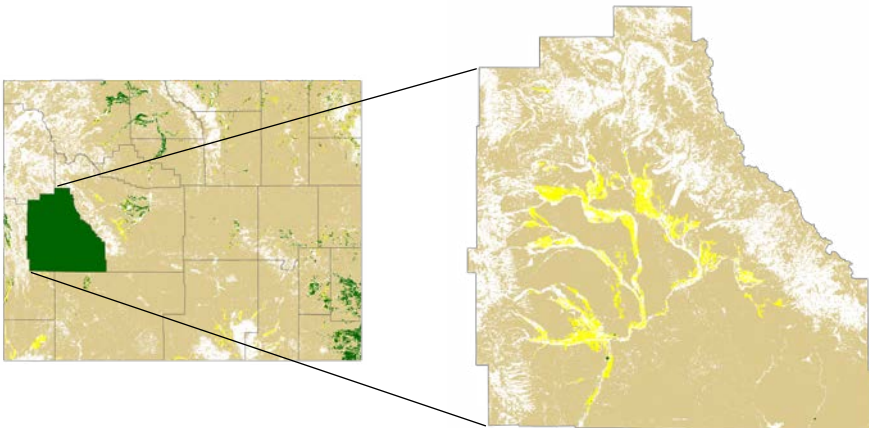
Source: IMPLAN model, 2021 Data, \$2021

Agricultural industries ranked by **total employment**, Sheridan County, WY, 2021

Agricultural production industry	Total Employment	Labor Income
Beef cattle ranching and farming	544	\$12,023,397
All other crop farming	497	\$9,228,371
Animal production, except cattle and poultry	61	\$2,872,333
Greenhouse, nursery, and floriculture production	24	\$821,195
Grain farming	11	\$387,140
Poultry and egg production	10	\$432,045
Sugar beet farming	6	\$304,320
Fruit farming	1	\$29,032
Vegetable and melon farming	0	\$6,250
Oilseed farming	0	\$0
Dairy cattle and milk production	0	\$0
Total	1,155	\$26,104,082

Source: IMPLAN model, 2021 Data, \$2021

SUBLETTE COUNTY



Non-Agricultural	25%
Rangeland	71%
Pasture/Hay	4%
Cultivated Crops	0%
Total	100%

Agricultural production highlights, Sublette County, WY, 2021

Farm and ranch operations¹

Number of operations	402
County total acres operated	546,353
Average area operated (acres per operation)	1,359

Livestock Inventory

Cattle and calves ²	57,000
Hogs and pigs ¹	0
Sheep and lambs ²	[D]
Milk cows on farms ¹	22
Honeybee colonies ¹	10

Crops¹ Acres harvested

Hay, including alfalfa	95,052
Wheat	0
Corn (grain)	0
Barley	[D]
Sugar beets	0
Dry edible beans	0
Corn (silage)	0

Source: ¹USDA NASS Quick Stats, 2017 Census of Agriculture: <https://quickstats.nass.usda.gov/results/625366B1-B2B1-3E99-BA2C-C808B4B5EBF1>

²USDA NASS Quick Stats, 2021 1st of January, survey data <https://quickstats.nass.usda.gov/results/401FE10A-6049-3A02-9187-E125089D045D>

Notes: "[D]" indicates data withheld by NASS to avoid disclosing data for individual operations

Direct economic output from agricultural industry sales and resulting indirect and induced economic impacts, Sublette County, WY, 2021

Impact	Output
Direct economic output (farm-gate sales)	\$57,111,812
Indirect output (ag supply chain sales)	\$11,434,265
Induced output (ag household spending)	\$9,096,160
Total output	\$77,642,238

Source: IMPLAN model, 2021 Data, \$2021

Agricultural industries ranked by **direct output**, Sublette County, WY, 2021

Agricultural production industry	Direct output	Percent of total
Beef cattle ranching and farming, including feedlots and dual-purpose ranching and farming	\$44,508,681	77.93%
All other crop farming	\$7,583,283	13.28%
Animal production, except cattle and poultry and eggs	\$4,192,593	7.34%
Poultry and egg production	\$592,173	1.04%
Greenhouse, nursery, and floriculture production	\$124,847	0.22%
Grain farming	\$104,807	0.18%
Vegetable and melon farming	\$5,430	0.01%
Fruit farming	\$0	0.00%
Sugar cane and sugar beet farming	\$0	0.00%
Oilseed farming	\$0	0.00%
Dairy cattle and milk production	\$0	0.00%
Total	\$57,111,812	100.00%

Source: IMPLAN model, 2021 Data, \$2021

Top 15 industries supported by **indirect spending** from agricultural production, Sublette County, WY, 2021

Industry	Indirect output
Other real estate	\$3,037,917
Truck transportation	\$1,859,728
Support activities for agriculture and forestry	\$1,720,216
Oil and gas extraction	\$939,343
Wholesale - Other non-durable goods merchant wholesalers	\$542,894
Wholesale - Petroleum and petroleum products	\$328,026
Electric power transmission and distribution	\$290,272
Commercial and industrial machinery and equipment rental and leasing	\$260,668
Maintenance and repair construction of nonresidential structures	\$205,945
Natural gas distribution	\$178,353
Petroleum refineries	\$150,961
Monetary authorities and depository credit intermediation	\$145,571
Accounting, tax preparation, bookkeeping, and payroll services	\$105,262
Landscape and horticultural services	\$101,041
Scenic and sightseeing transportation and support activities for transportation	\$99,706
...	
Total from 121 other industries with direct output effects	\$1,468,361
Total	\$11,434,265

Source: IMPLAN model, 2021 Data, \$2021

Employment and labor income supported by agricultural industries, Sublette County, WY, 2021

Impact	Employment	Labor Income
Direct (farm-gate)	459	\$24,255,684
Indirect (business-to-business)	153	\$5,627,914
Induced (household spending)	57	\$1,866,489
Total	669	\$31,750,087

Source: IMPLAN model, 2021 Data, \$2021

Top 15 industries supported by **induced spending** from agricultural production, Sublette County, WY, 2021

Industry	Induced output
Owner-occupied dwellings	\$2,363,001
Retail - Non-store retailers	\$524,235
Tenant-occupied housing	\$347,102
Full-service restaurants	\$337,912
Other real estate	\$323,669
Funds, trusts, and other financial vehicles	\$262,711
Automotive repair and maintenance, except car washes	\$216,739
Oil and gas extraction	\$211,897
Monetary authorities and depository credit intermediation	\$210,785
Retail - General merchandise stores	\$192,304
Electric power transmission and distribution	\$190,559
Limited-service restaurants	\$180,570
Truck transportation	\$168,012
All other food and drinking places	\$165,091
Car washes	\$127,762
...	
Total from 137 other industries with induced output effects	\$3,273,811
Total	\$9,096,160

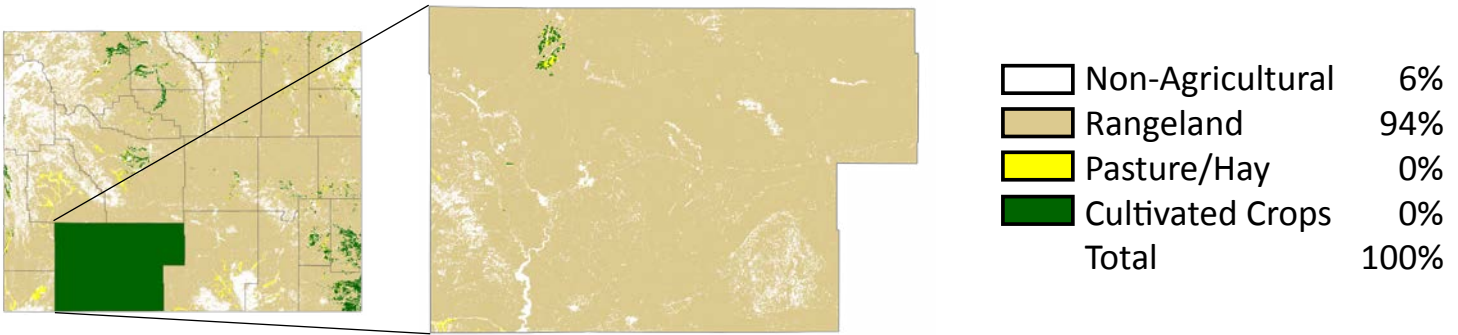
Source: IMPLAN model, 2021 Data, \$2021

Agricultural industries ranked by **total employment**, Sublette County, WY, 2021

Agricultural production industry	Total Employment	Labor Income
Beef cattle ranching and farming	323	\$17,970,944
All other crop farming	290	\$8,075,595
Animal production, except cattle and poultry	48	\$5,338,583
Greenhouse, nursery, and floriculture production	3	\$108,619
Grain farming	2	\$117,016
Poultry and egg production	2	\$135,610
Vegetable and melon farming	0	\$3,720
Sugar beet farming	0	\$0
Dairy cattle and milk production	0	\$0
Oilseed farming	0	\$0
Fruit farming	0	\$0
Total	669	\$31,750,087

Source: IMPLAN model, 2021 Data, \$2021

SWEETWATER COUNTY



Agricultural production highlights, Sweetwater County, WY, 2021

Farm and ranch operations¹

Number of operations	219
County total acres operated	1,370,042
Average area operated (acres per operation)	6,256

Livestock Inventory

Cattle and calves ²	21,000
Hogs and pigs ¹	113
Sheep and lambs ²	5,300
Milk cows on farms ¹	10
Honeybee colonies ¹	[D]

Crops¹ Acres harvested

Hay, including alfalfa	26,102
Wheat	0
Corn (grain)	0
Barley	827
Sugar beets	0
Dry edible beans	0
Corn (silage)	0

Source: ¹USDA NASS Quick Stats, 2017 Census of Agriculture: <https://quickstats.nass.usda.gov/results/625366B1-B2B1-3E99-BA2C-C808B4B5EBF1>

²USDA NASS Quick Stats, 2021 1st of January, survey data <https://quickstats.nass.usda.gov/results/401FE10A-6049-3A02-9187-E125089D045D>

Notes: "[D]" indicates data withheld by NASS to avoid disclosing data for individual operations

Direct economic output from agricultural industry sales and resulting indirect and induced economic impacts, Sweetwater County, WY, 2021

Impact	Output
Direct economic output (farm-gate sales)	\$24,113,176
Indirect output (ag supply chain sales)	\$3,903,497
Induced output (ag household spending)	\$8,408,087
Total output	\$36,424,760

Source: IMPLAN model, 2021 Data, \$2021

Agricultural industries ranked by **direct output**, Sweetwater County, WY, 2021

Agricultural production industry	Direct output	Percent of total
Beef cattle ranching and farming, including feedlots and dual-purpose ranching and farming	\$16,690,271	69.22%
All other crop farming	\$5,688,804	23.59%
Animal production, except cattle and poultry and eggs	\$1,042,612	4.32%
Poultry and egg production	\$411,969	1.71%
Grain farming	\$217,097	0.90%
Greenhouse, nursery, and floriculture production	\$62,423	0.26%
Sugar cane and sugar beet farming	\$0	0.00%
Fruit farming	\$0	0.00%
Vegetable and melon farming	\$0	0.00%
Dairy cattle and milk production	\$0	0.00%
Oilseed farming	\$0	0.00%
Total	\$24,113,176	100.00%

Source: IMPLAN model, 2021 Data, \$2021

Top 15 industries supported by **indirect spending** from agricultural production, Sweetwater County, WY, 2021

Industry	Indirect output
Other real estate	\$994,786
Truck transportation	\$795,213
Support activities for agriculture and forestry	\$321,423
Wholesale - Other non-durable goods merchant wholesalers	\$218,216
Wholesale - Machinery, equipment, and supplies	\$97,888
Wholesale - Petroleum and petroleum products	\$94,403
Natural gas distribution	\$92,383
Rail transportation	\$90,727
Electric power transmission and distribution	\$75,709
Oil and gas extraction	\$68,407
Commercial and industrial machinery and equipment rental and leasing	\$68,007
Employment services	\$67,935
Monetary authorities and depository credit intermediation	\$67,097
Other local government enterprises	\$50,695
Electric power generation - Fossil fuel	\$47,301
...	
Total from 148 other industries with direct output effects	\$753,308
Total	\$3,903,497

Source: IMPLAN model, 2021 Data, \$2021

Top 15 industries supported by **induced spending** from agricultural production, Sweetwater County, WY, 2021

Industry	Induced output
Owner-occupied dwellings	\$1,811,597
Limited-service restaurants	\$465,342
Full-service restaurants	\$339,272
Tenant-occupied housing	\$328,145
Other real estate	\$238,452
Retail - General merchandise stores	\$226,696
Retail - Food and beverage stores	\$211,875
Hospitals	\$207,819
Monetary authorities and depository credit intermediation	\$205,151
Funds, trusts, and other financial vehicles	\$173,601
Retail - Non-store retailers	\$157,615
Automotive repair and maintenance, except car washes	\$154,112
Truck transportation	\$150,512
All other food and drinking places	\$139,338
Car washes	\$120,800
...	
Total from 174 other industries with induced output effects	\$3,477,759
Total	\$8,408,087

Source: IMPLAN model, 2021 Data, \$2021

Employment and labor income supported by agricultural industries, Sweetwater County, WY, 2021

Impact	Employment	Labor Income
Direct (farm-gate)	282	\$18,999,847
Indirect (business-to-business)	39	\$1,600,551
Induced (household spending)	56	\$2,131,849
Total	377	\$22,732,247

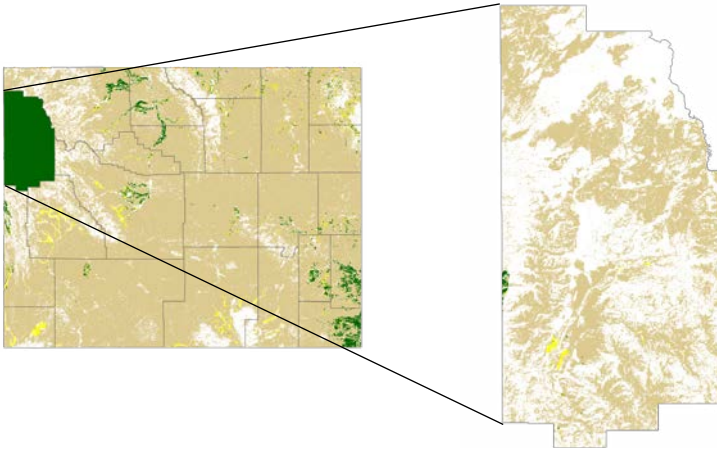
Source: IMPLAN model, 2021 Data, \$2021

Agricultural industries ranked by **total employment**, Sweetwater County 2021

Agricultural production industry	Total Employment	Labor Income
All other crop farming	204	\$5,136,940
Beef cattle ranching and farming	152	\$14,247,811
Animal production, except cattle and poultry	16	\$2,940,946
Grain farming	3	\$268,369
Poultry and egg production	1	\$94,207
Greenhouse, nursery, and floriculture production	1	\$43,973
Sugar beet farming	0	\$0
Oilseed farming	0	\$0
Vegetable and melon farming	0	\$0
Dairy cattle and milk production	0	\$0
Fruit farming	0	\$0
Total	377	\$22,732,247

Source: IMPLAN model, 2021 Data, \$2021

TETON COUNTY



Non-Agricultural	56%
Rangeland	43%
Pasture/Hay	0%
Cultivated Crops	0%
Total	100%

Agricultural production highlights, Teton County, WY, 2021

Farm and ranch operations¹

Number of operations	142
County total acres operated	67,649
Average area operated (acres per operation)	476

Livestock Inventory

Cattle and calves ²	4,000
Hogs and pigs ¹	[D]
Sheep and lambs ¹	163
Milk cows on farms ¹	[D]
Honeybee colonies ¹	[D]

Crops¹ Acres harvested

Hay, including alfalfa	10,818
Wheat	0
Corn (grain)	0
Barley	1,698
Sugar beets	0
Dry edible beans	0
Corn (silage)	0

Source: ¹USDA NASS Quick Stats, 2017 Census of Agriculture: <https://quickstats.nass.usda.gov/results/625366B1-B2B1-3E99-BA2C-C808B4B5EBF1>

²USDA NASS Quick Stats, 2021 1st of January, survey data <https://quickstats.nass.usda.gov/results/401FE10A-6049-3A02-9187-E125089D045D>

Notes: "[D]" indicates data withheld by NASS to avoid disclosing data for individual operations

Direct economic output from agricultural industry sales and resulting indirect and induced economic impacts, Teton County, WY, 2021

Impact	Output
Direct economic output (farm-gate sales)	\$11,532,444
Indirect output (ag supply chain sales)	\$2,892,911
Induced output (ag household spending)	\$2,354,993
Total output	\$16,780,348

Source: IMPLAN model, 2021 Data, \$2021

Agricultural industries ranked by **direct output**, Teton County, WY, 2021

Agricultural production industry	Direct output	Percent of total
Animal production, except cattle and poultry and eggs	\$3,226,181	27.97%
Beef cattle ranching and farming, including feedlots and dual-purpose ranching and farming	\$3,057,896	26.52%
All other crop farming	\$2,989,305	25.92%
Grain farming	\$1,095,407	9.50%
Greenhouse, nursery, and floriculture production	\$762,172	6.61%
Vegetable and melon farming	\$204,482	1.77%
Poultry and egg production	\$195,497	1.70%
Fruit farming	\$1,504	0.01%
Sugar cane and sugar beet farming	\$0	0.00%
Dairy cattle and milk production	\$0	0.00%
Oilseed farming	\$0	0.00%
Total	\$11,532,444	100.00%

Source: IMPLAN model, 2021 Data, \$2021

Top 15 industries supported by **indirect spending** from agricultural production, Teton County, WY, 2021

Industry	Indirect output
Other real estate	\$823,102
Wholesale - Other non-durable goods merchant wholesalers	\$395,890
Support activities for agriculture and forestry	\$204,328
Truck transportation	\$152,776
Monetary authorities and depository credit intermediation	\$94,886
Insurance carriers, except direct life	\$84,688
Petroleum refineries	\$81,234
Insurance agencies, brokerages, and related activities	\$76,484
Other local government enterprises	\$66,508
Maintenance and repair construction of nonresidential structures	\$62,095
Commercial and industrial machinery and equipment rental and leasing	\$58,496
Management of companies and enterprises	\$50,438
Oil and gas extraction	\$41,333
Services to buildings	\$39,106
Legal services	\$32,038
...	
Total from 160 other industries with direct output effects	\$629,509
Total	\$2,892,911

Source: IMPLAN model, 2021 Data, \$2021

Top 15 industries supported by **induced spending** from agricultural production, Teton County, WY, 2021

Industry	Induced output
Owner-occupied dwellings	\$332,667
Other financial investment activities	\$210,277
Monetary authorities and depository credit intermediation	\$120,868
Other real estate	\$84,617
Retail - Non-store retailers	\$76,903
Full-service restaurants	\$69,881
Limited-service restaurants	\$69,069
Offices of physicians	\$60,363
Tenant-occupied housing	\$57,839
Funds, trusts, and other financial vehicles	\$52,153
Management of companies and enterprises	\$41,925
Retail - Food and beverage stores	\$41,904
Securities and commodity contracts intermediation and brokerage	\$39,313
Insurance agencies, brokerages, and related activities	\$33,558
Automotive repair and maintenance, except car washes	\$32,474
...	
Total from 180 other industries with induced output effects	\$1,031,182
Total	\$2,354,993

Source: IMPLAN model, 2021 Data, \$2021

Employment and labor income supported by agricultural industries, Teton County, WY, 2021

Impact	Employment	Labor Income
Direct (farm-gate)	219	\$12,296,921
Indirect (business-to-business)	48	\$952,321
Induced (household spending)	12	\$754,332
Total	279	\$14,003,575

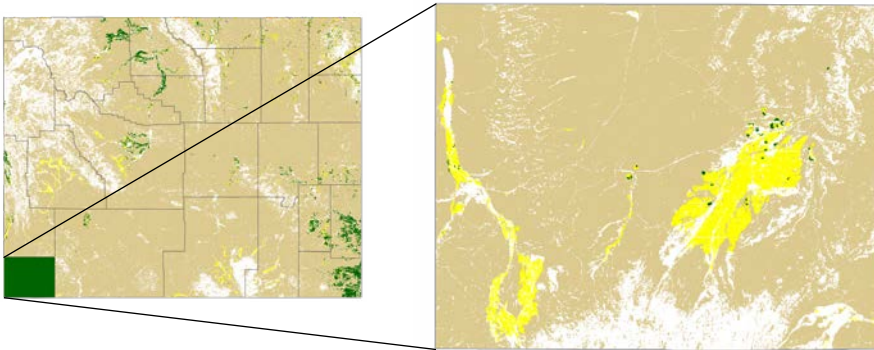
Source: IMPLAN model, 2021 Data, \$2021

Agricultural industries ranked by **total employment**, Teton County, WY, 2021

Agricultural production industry	Total Employment	Labor Income
All other crop farming	156	\$4,552,321
Animal production, except cattle and poultry	45	\$5,514,418
Beef cattle ranching and farming	32	\$1,470,320
Grain farming	25	\$1,183,964
Greenhouse, nursery, and floriculture production	16	\$1,044,700
Vegetable and melon farming	4	\$164,459
Poultry and egg production	1	\$71,662
Fruit farming	0	\$1,730
Sugar beet farming	0	\$0
Oilseed farming	0	\$0
Dairy cattle and milk production	0	\$0
Total	279	\$14,003,575

Source: IMPLAN model, 2021 Data, \$2021

UINTA COUNTY



Non-Agricultural	17%
Rangeland	77%
Pasture/Hay	6%
Cultivated Crops	0%
Total	100%

Agricultural production highlights, Uinta County, WY, 2021

Farm and ranch operations¹

Number of operations	403
County total acres operated	656,988
Average area operated (acres per operation)	1,630

Livestock Inventory

Cattle and calves ²	38,500
Hogs and pigs ¹	36
Sheep and lambs ²	29,500
Milk cows on farms ¹	0
Honeybee colonies ¹	233

Crops¹ Acres harvested

Hay, including alfalfa	45,580
Wheat	0
Corn (grain)	0
Barley	132
Sugar beets	0
Dry edible beans	0
Corn (silage)	0

Source: ¹USDA NASS Quick Stats, 2017 Census of Agriculture: <https://quickstats.nass.usda.gov/results/625366B1-B2B1-3E99-BA2C-C808B4B5EBF1>
²USDA NASS Quick Stats, 2021 1st of January, survey data <https://quickstats.nass.usda.gov/results/401FE10A-6049-3A02-9187-E125089D045D>

Direct economic output from agricultural industry sales and resulting indirect and induced economic impacts, Uinta County, WY, 2021

Impact	Output
Direct economic output (farm-gate sales)	\$43,120,640
Indirect output (ag supply chain sales)	\$6,458,694
Induced output (ag household spending)	\$7,059,892
Total output	\$56,639,227

Source: IMPLAN model, 2021 Data, \$2021

Agricultural industries ranked by **direct output**, Uinta County, WY, 2021

Agricultural production industry	Direct output	Percent of total
Beef cattle ranching and farming, including feedlots and dual-purpose ranching and farming	\$29,995,873	69.56%
Animal production, except cattle and poultry and eggs	\$7,176,217	16.64%
All other crop farming	\$4,823,408	11.19%
Poultry and egg production	\$1,004,879	2.33%
Grain farming	\$101,674	0.24%
Vegetable and melon farming	\$18,589	0.04%
Fruit farming	\$0	0.00%
Sugar cane and sugar beet farming	\$0	0.00%
Greenhouse, nursery, and floriculture production	\$0	0.00%
Dairy cattle and milk production	\$0	0.00%
Oilseed farming	\$0	0.00%
Total	\$43,120,640	100.00%

Source: IMPLAN model, 2021 Data, \$2021

Top 15 industries supported by **indirect spending** from agricultural production, Uinta County, WY, 2021

Industry	Indirect output
Other real estate	\$1,719,629
Wholesale - Other non-durable goods merchant wholesalers	\$1,004,528
Petroleum refineries	\$642,390
Truck transportation	\$638,854
Electric power transmission and distribution	\$208,277
Wholesale - Petroleum and petroleum products	\$202,749
Natural gas distribution	\$180,208
Rail transportation	\$150,704
Commercial and industrial machinery and equipment rental and leasing	\$139,863
Support activities for agriculture and forestry	\$122,610
Monetary authorities and depository credit intermediation	\$116,808
Wholesale - Machinery, equipment, and supplies	\$78,207
Securities and commodity contracts intermediation and brokerage	\$76,291
Insurance carriers, except direct life	\$74,016
Electric power generation - Wind	\$71,988
...	
Total from 139 other industries with direct output effects	\$1,031,574
Total	\$6,458,694

Source: IMPLAN model, 2021 Data, \$2021

Top 15 industries supported by **induced spending** from agricultural production, Uinta County, WY, 2021

Industry	Induced output
Owner-occupied dwellings	\$1,418,078
Hospitals	\$479,990
Limited-service restaurants	\$362,609
Offices of physicians	\$254,219
Other real estate	\$231,857
Retail - Non-store retailers	\$224,474
Monetary authorities and depository credit intermediation	\$186,705
Retail - General merchandise stores	\$186,614
Wireless telecommunications carriers (except satellite)	\$171,535
Funds, trusts, and other financial vehicles	\$168,058
Electric power transmission and distribution	\$160,144
Petroleum refineries	\$155,985
Full-service restaurants	\$154,905
Retail - Food and beverage stores	\$150,496
Securities and commodity contracts intermediation and brokerage	\$126,643
...	
Total from 155 other industries with induced output effects	\$2,627,579
Total	\$7,059,892

Source: IMPLAN model, 2021 Data, \$2021

Employment and labor income supported by agricultural industries, Uinta County, WY, 2021

Impact	Employment	Labor Income
Direct (farm-gate)	394	\$13,423,984
Indirect (business-to-business)	44	\$1,486,867
Induced (household spending)	47	\$1,716,698
Total	485	\$16,627,549

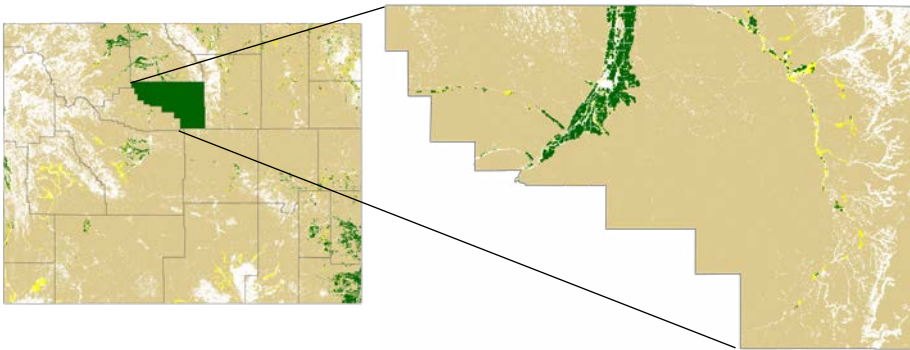
Source: IMPLAN model, 2021 Data, \$2021

Agricultural industries ranked by **total employment**, Uinta County, WY, 2021

Agricultural production industry	Total Employment	Labor Income
Beef cattle ranching and farming	218	\$7,727,059
All other crop farming	179	\$2,615,926
Animal production, except cattle and poultry	83	\$6,079,365
Poultry and egg production	3	\$149,204
Grain farming	1	\$49,804
Vegetable and melon farming	0	\$6,191
Dairy cattle and milk production	0	\$0
Sugar beet farming	0	\$0
Oilseed farming	0	\$0
Fruit farming	0	\$0
Greenhouse, nursery, and floriculture production	0	\$0
Total	485	\$16,627,549

Source: IMPLAN model, 2021 Data, \$2021

WASHAKIE COUNTY



Non-Agricultural	8%
Rangeland	89%
Pasture/Hay	1%
Cultivated Crops	3%
Total	100%

Agricultural production highlights, Washakie County, WY, 2021

Farm and ranch operations¹

Number of operations	246
County total acres operated	316,161
Average area operated (acres per operation)	1,285

Livestock Inventory

Cattle and calves ²	30,000
Hogs and pigs ¹	266
Sheep and lambs ²	27,000
Milk cows on farms ¹	12
Honeybee colonies ¹	13

Crops¹ Acres harvested

Hay, including alfalfa	15,436
Wheat	[D]
Corn (grain)	1,065
Barley	9,682
Sugar beets	4,908
Dry edible beans	0
Corn (silage)	1,759

Source: ¹USDA NASS Quick Stats, 2017 Census of Agriculture: <https://quickstats.nass.usda.gov/results/625366B1-B2B1-3E99-BA2C-C808B4B5EBF1>

²USDA NASS Quick Stats, 2021 1st of January, survey data <https://quickstats.nass.usda.gov/results/401FE10A-6049-3A02-9187-E125089D045D>

Notes: "[D]" indicates data withheld by NASS to avoid disclosing data for individual operations

Direct economic output from agricultural industry sales and resulting indirect and induced economic impacts, Washakie County, WY, 2021

Impact	Output
Direct economic output (farm-gate sales)	\$53,687,325
Indirect output (ag supply chain sales)	\$16,633,210
Induced output (ag household spending)	\$13,501,160
Total output	\$83,821,694

Source: IMPLAN model, 2021 Data, \$2021

Agricultural industries ranked by direct output, Washakie County, WY, 2021

Agricultural production industry	Direct output	Percent of total
Beef cattle ranching and farming, including feedlots and dual-purpose ranching and farming	\$23,614,481	43.99%
Animal production, except cattle and poultry and eggs	\$9,710,186	18.09%
Grain farming	\$7,674,722	14.30%
All other crop farming	\$6,937,507	12.92%
Sugar cane and sugar beet farming	\$4,968,730	9.25%
Poultry and egg production	\$715,726	1.33%
Vegetable and melon farming	\$55,768	0.10%
Fruit farming	\$10,206	0.02%
Oilseed farming	\$0	0.00%
Dairy cattle and milk production	\$0	0.00%
Greenhouse, nursery, and floriculture production	\$0	0.00%
Total	\$53,687,325	100.00%

Source: IMPLAN model, 2021 Data, \$2021

Top 15 industries supported by **indirect spending** from agricultural production, Washakie County, WY, 2021

Industry	Indirect output
Other real estate	\$4,296,094
Wholesale - Other non-durable goods merchant wholesalers	\$3,453,444
Truck transportation	\$1,570,500
Support activities for agriculture and forestry	\$1,551,359
Maintenance and repair construction of nonresidential structures	\$402,956
Electric power transmission and distribution	\$401,246
Oil and gas extraction	\$378,464
Natural gas distribution	\$357,802
Petroleum refineries	\$356,478
Monetary authorities and depository credit intermediation	\$350,569
Commercial and industrial machinery and equipment rental and leasing	\$324,880
Other local government enterprises	\$295,469
Wholesale - Machinery, equipment, and supplies	\$220,758
Accounting, tax preparation, bookkeeping, and payroll services	\$190,501
Warehousing and storage	\$171,538
...	
Total from 120 other industries with direct output effects	\$2,311,151
Total	\$16,633,210

Source: IMPLAN model, 2021 Data, \$2021

Employment and labor income supported by agricultural industries, Washakie County, WY, 2021

Impact	Employment	Labor Income
Direct (farm-gate)	342	\$21,985,376
Indirect (business-to-business)	161	\$6,494,531
Induced (household spending)	91	\$3,555,394
Total	593	\$32,035,301

Source: IMPLAN model, 2021 Data, \$2021

Top 15 industries supported by **induced spending** from agricultural production, Washakie County, WY, 2021

Industry	Induced output
Owner-occupied dwellings	\$2,156,984
Hospitals	\$1,957,592
Limited-service restaurants	\$519,224
Other real estate	\$496,094
Monetary authorities and depository credit intermediation	\$481,758
Retail - Non-store retailers	\$476,560
Retail - General merchandise stores	\$298,920
Funds, trusts, and other financial vehicles	\$254,701
Electric power transmission and distribution	\$250,246
Wholesale - Other non-durable goods merchant wholesalers	\$243,362
Automotive repair and maintenance, except car washes	\$242,737
Wired telecommunications carriers	\$223,019
Truck transportation	\$219,196
Other local government enterprises	\$215,586
Full-service restaurants	\$194,183
...	
Total from 136 other industries with induced output effects	\$5,270,997
Total	\$13,501,160

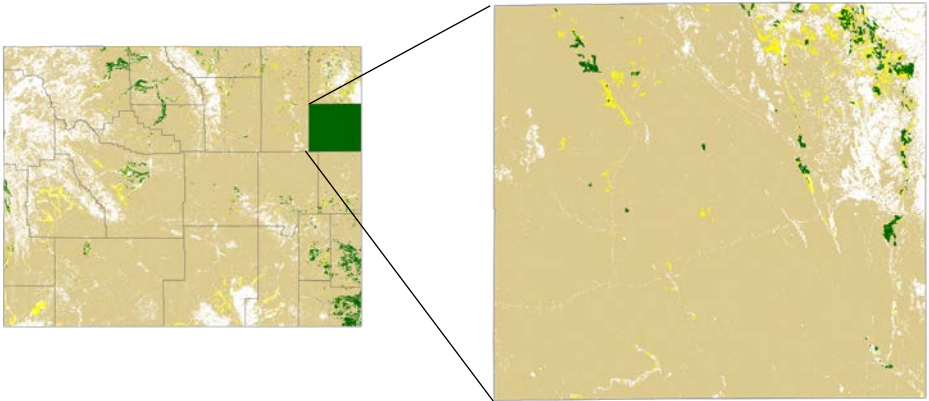
Source: IMPLAN model, 2021 Data, \$2021

Agricultural industries ranked by **total employment**, Washakie County, WY, 2021

Agricultural production industry	Total Employment	Labor Income
All other crop farming	178	\$4,673,997
Beef cattle ranching and farming	140	\$7,833,435
Grain farming	114	\$5,981,389
Animal production, except cattle and poultry	87	\$9,351,962
Sugar beet farming	71	\$4,020,025
Poultry and egg production	3	\$142,096
Vegetable and melon farming	1	\$26,034
Fruit farming	0	\$6,363
Dairy cattle and milk production	0	\$0
Oilseed farming	0	\$0
Greenhouse, nursery, and floriculture production	0	\$0
Total	593	\$32,035,301

Source: IMPLAN model, 2021 Data, \$2021

WESTON COUNTY



Non-Agricultural	8%
Rangeland	89%
Pasture/Hay	1%
Cultivated Crops	1%
Total	100%

Agricultural production highlights, Weston County, WY, 2021

Farm and ranch operations¹

Number of operations	247
County total acres operated	1,227,012
Average area operated (acres per operation)	4,968

Livestock Inventory

Cattle and calves ²	44,500
Hogs and pigs ¹	123
Sheep and lambs ²	2,500
Milk cows on farms ¹	31
Honeybee colonies ¹	[D]

Crops¹ Acres harvested

Hay, including alfalfa	18,038
Wheat	[D]
Corn (grain)	0
Barley	[D]
Sugar beets	0
Dry edible beans	0
Corn (silage)	0

Source: ¹USDA NASS Quick Stats, 2017 Census of Agriculture: <https://quickstats.nass.usda.gov/results/625366B1-B2B1-3E99-BA2C-C808B4B5EBF1>

²USDA NASS Quick Stats, 2021 1st of January, survey data <https://quickstats.nass.usda.gov/results/401FE10A-6049-3A02-9187-E125089D045D>

Notes: "[D]" indicates data withheld by NASS to avoid disclosing data for individual operations

Direct economic output from agricultural industry sales and resulting indirect and induced economic impacts, Weston County, WY, 2021

Impact	Output
Direct economic output (farm-gate sales)	\$39,591,134
Indirect output (ag supply chain sales)	\$4,316,401
Induced output (ag household spending)	\$2,037,581
Total output	\$45,945,116

Source: IMPLAN model, 2021 Data, \$2021

Agricultural industries ranked by **direct output**, Weston County, WY, 2021

Agricultural production industry	Direct output	Percent of total
Beef cattle ranching and farming, including feedlots and dual-purpose ranching and farming	\$34,556,776	87.28%
Dairy cattle and milk production	\$2,116,218	5.35%
Animal production, except cattle and poultry and eggs	\$916,115	2.31%
Poultry and egg production	\$906,690	2.29%
All other crop farming	\$810,386	2.05%
Grain farming	\$142,196	0.36%
Greenhouse, nursery, and floriculture production	\$141,510	0.36%
Fruit farming	\$1,242	0.00%
Oilseed farming	\$0	0.00%
Vegetable and melon farming	\$0	0.00%
Sugar cane and sugar beet farming	\$0	0.00%
Total	\$39,591,134	100.00%

Source: IMPLAN model, 2021 Data, \$2021

Top 15 industries supported by **indirect spending** from agricultural production, Weston County, WY, 2021

Industry	Indirect output
Other real estate	\$916,634
Truck transportation	\$748,821
Petroleum refineries	\$665,344
Support activities for agriculture and forestry	\$462,863
Wholesale - Other non-durable goods merchant wholesalers	\$359,706
Rail transportation	\$170,957
Monetary authorities and depository credit intermediation	\$116,091
Insurance carriers, except direct life	\$102,249
Securities and commodity contracts intermediation and brokerage	\$71,185
Full-service restaurants	\$52,521
Wholesale - Drugs and druggist sundries	\$44,480
Commercial and industrial machinery and equipment rental and leasing	\$44,189
Natural gas distribution	\$40,146
Insurance agencies, brokerages, and related activities	\$35,420
Retail - Gasoline stores	\$34,998
...	
Total from 103 other industries with direct output effects	\$450,797
Total	\$4,316,401

Source: IMPLAN model, 2021 Data, \$2021

Top 15 industries supported by **induced spending** from agricultural production, Weston County, WY, 2021

Industry	Induced output
Owner-occupied dwellings	\$531,615
Retail - Non-store retailers	\$127,669
Tenant-occupied housing	\$115,125
Monetary authorities and depository credit intermediation	\$88,653
Full-service restaurants	\$75,022
Retail - Food and beverage stores	\$73,975
Petroleum refineries	\$60,634
Limited-service restaurants	\$59,194
Insurance carriers, except direct life	\$56,007
Funds, trusts, and other financial vehicles	\$55,531
Other real estate	\$35,050
Nursing and community care facilities	\$33,854
Securities and commodity contracts intermediation and brokerage	\$31,597
Retail - Gasoline stores	\$31,178
Maintenance and repair construction of residential structures	\$28,954
...	
Total from 119 other industries with induced output effects	\$633,524
Total	\$2,037,581

Source: IMPLAN model, 2021 Data, \$2021

Employment and labor income supported by agricultural industries, Weston County, WY, 2021

Impact	Employment	Labor Income
Direct (farm-gate)	311	\$5,247,079
Indirect (business-to-business)	60	\$1,643,582
Induced (household spending)	13	\$383,054
Total	385	\$7,273,715

Source: IMPLAN model, 2021 Data, \$2021

Agricultural industries ranked by total employment, Weston County, WY, 2021

Agricultural production industry	Total Employment	Labor Income
Beef cattle ranching and farming	303	\$4,972,156
All other crop farming	44	\$881,170
Animal production, except cattle and poultry	13	\$544,427
Dairy cattle and milk production	13	\$444,177
Greenhouse, nursery, and floriculture production	4	\$138,951
Poultry and egg production	4	\$199,574
Grain farming	3	\$92,275
Fruit farming	0	\$987
Sugar beet farming	0	\$0
Vegetable and melon farming	0	\$0
Oilseed farming	0	\$0
Total	385	\$7,273,715

Source: IMPLAN model, 2021 Data, \$2021

This page intentionally left blank.

This page intentionally left blank.



UNIVERSITY
OF WYOMING